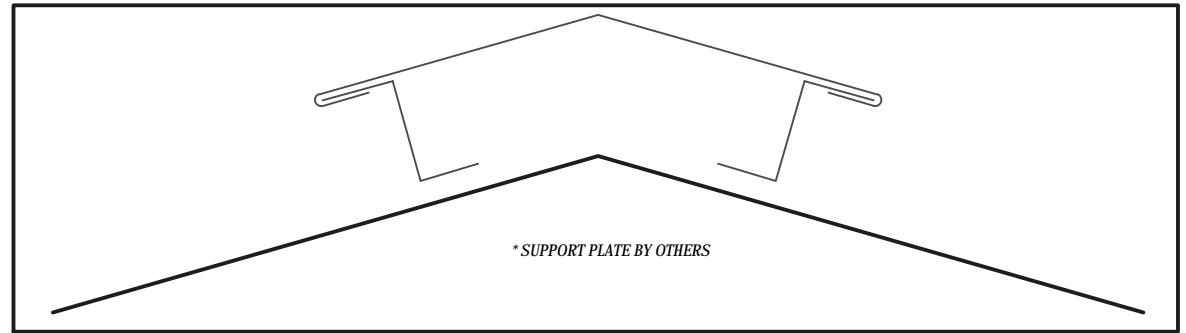
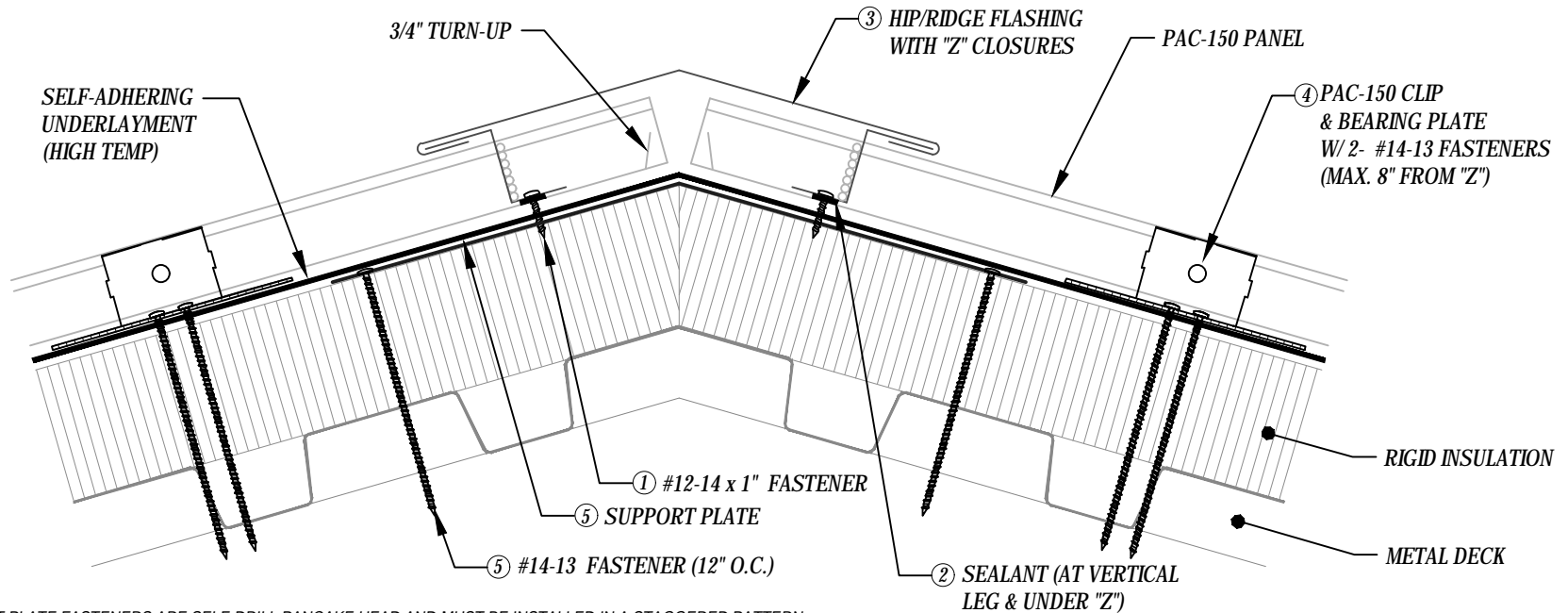


# HIP / RIDGE DETAIL



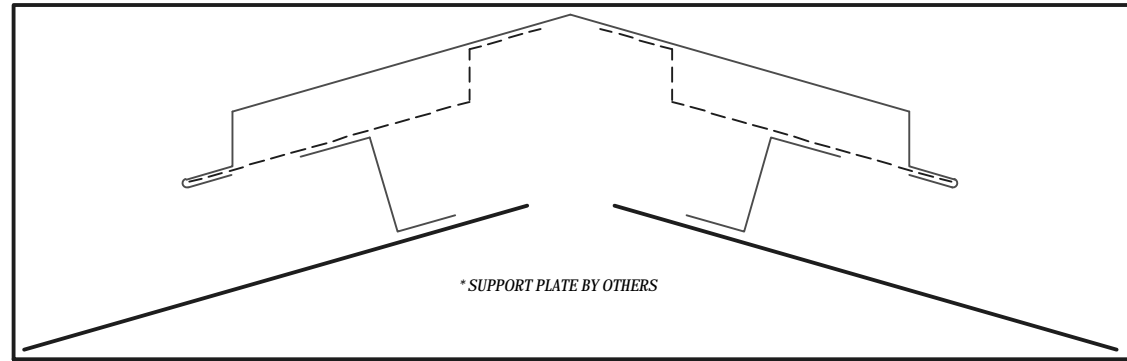
FLASHING COMPONENTS



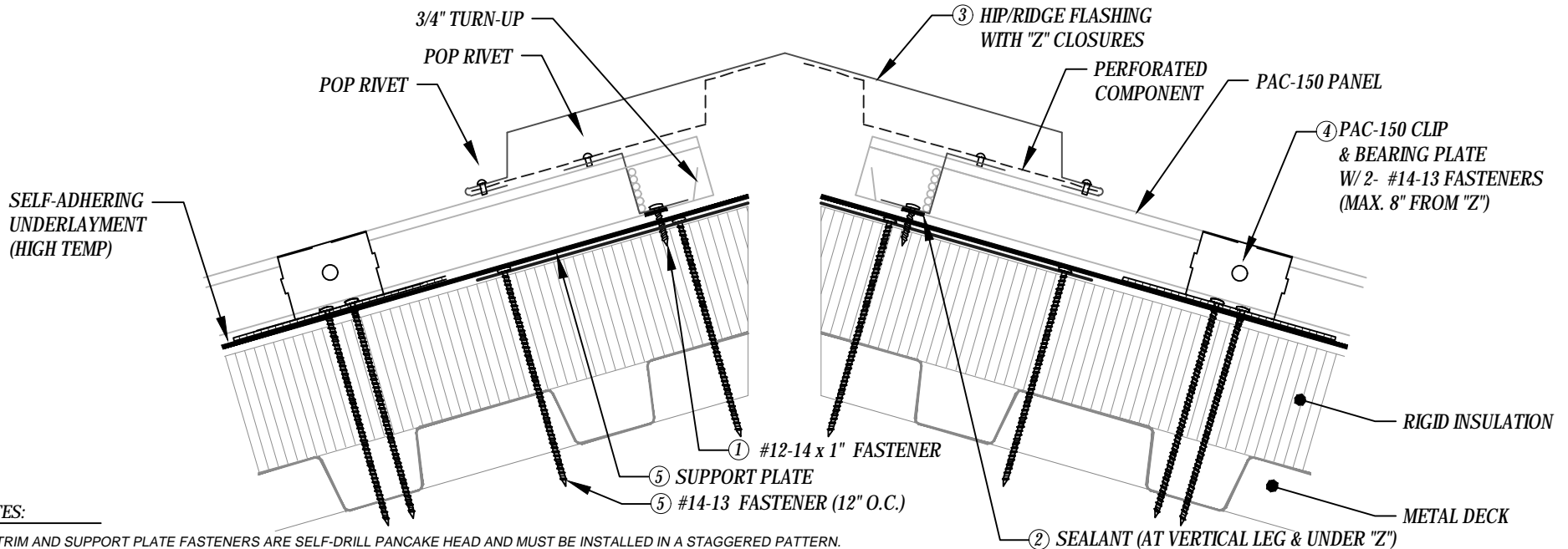
## KEYNOTES:

- TRIM AND SUPPORT PLATE FASTENERS ARE SELF-DRILL PANCAKE HEAD AND MUST BE INSTALLED IN A STAGGERED PATTERN.
  - CLIPS, FASTENERS, AND SUPPORT PLATE MATERIAL: GALVANIZED WHEN STEEL PANELS ARE UTILIZED; STAINLESS STEEL WHEN ALUMINUM PANELS ARE UTILIZED.
  - SUPPORT PLATE AND CLIP FASTENERS MUST BE OF SUFFICIENT LENGTH TO PENETRATE LOWEST FLUTE OF METAL DECK BY 5/8" MINIMUM THREAD LENGTH.
- ① "Z" COMPONENT
    - MINIMUM HEIGHT: 1/8" CLEARANCE OF PANEL RIB
    - FASTENED AS FOLLOWS: 12" & 16" PANELS (4 FASTENERS PER PANEL MINIMUM); 18" PANELS (6 FASTENERS PER PANEL MINIMUM)
    - FASTENING LEG: 1 1/4" MINIMUM TOP LEG: 1 1/2" MINIMUM
    - "Z" MUST BE CUT TO TIGHT FIT OF PANEL DIMENSION: **1/8" MAXIMUM GAP**
  - ② SEALANT
    - TUBE OR TAPE SEALANT IS ACCEPTABLE BELOW THE "Z"
    - TUBE SEALANT PLACED AT BACKSIDE OF VERTICAL LEGS
    - 1" TAPE WIDTH OR 1/2" BEAD WIDTH PRIOR TO COMPRESSION
  - ③ COVER: HEMMED 1" AND FULLY ENGAGED TO "Z" CLOSURE.
  - ④ FIRST PANEL CLIP TO BE LOCATED A **MAXIMUM OF 8" FROM "Z" COMPONENT.**
  - ⑤ SUPPORT PLATE: 20 GA. MINIMUM (IF WOOD NAILERS ARE PRESENT, SUPPORT PLATE IS NOT NEEDED)

# VENTED RIDGE DETAIL



FLASHING COMPONENTS



## KEYNOTES:

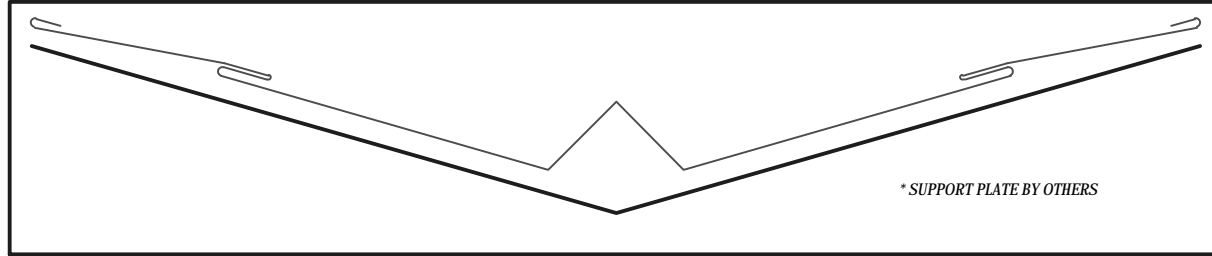
- TRIM AND SUPPORT PLATE FASTENERS ARE SELF-DRILL PANCAKE HEAD AND MUST BE INSTALLED IN A STAGGERED PATTERN.
- CLIPS, FASTENERS, AND SUPPORT PLATE MATERIAL: GALVANIZED WHEN STEEL PANELS ARE UTILIZED; STAINLESS STEEL WHEN ALUMINUM PANELS ARE UTILIZED.
- SUPPORT PLATE AND CLIP FASTENERS MUST BE OF SUFFICIENT LENGTH TO PENETRATE LOWEST FLUTE OF METAL DECK BY 5/8" MINIMUM THREAD LENGTH.

- ① "Z" COMPONENT
  - MINIMUM HEIGHT: 1/8" CLEARANCE OF PANEL RIB
  - FASTENED AS FOLLOWS: 12" & 16" PANELS (4 FASTENERS PER PANEL MINIMUM); 18" PANELS (6 FASTENERS PER PANEL MINIMUM)
  - FASTENING LEG: 1 1/4" MINIMUM TOP LEG: 1 1/2" MINIMUM
  - "Z" MUST BE CUT TO TIGHT FIT OF PANEL DIMENSION: **1/8" MAXIMUM GAP**
- ② SEALANT
  - TUBE OR TAPE SEALANT IS ACCEPTABLE BELOW THE "Z"
  - TUBE SEALANT PLACED AT BACKSIDE OF VERTICAL LEGS
  - 1" TAPE WIDTH OR 1/2" BEAD WIDTH PRIOR TO COMPRESSION
- ③ COVER: HEMMED 1" AND FULLY ENGAGED TO "Z" CLOSURE.
- ④ FIRST PANEL CLIP TO BE LOCATED A **MAXIMUM OF 8" FROM "Z" COMPONENT.**
- ⑤ SUPPORT PLATE: 20 GA. MINIMUM (IF WOOD NAILERS ARE PRESENT, SUPPORT PLATE IS NOT NEEDED)

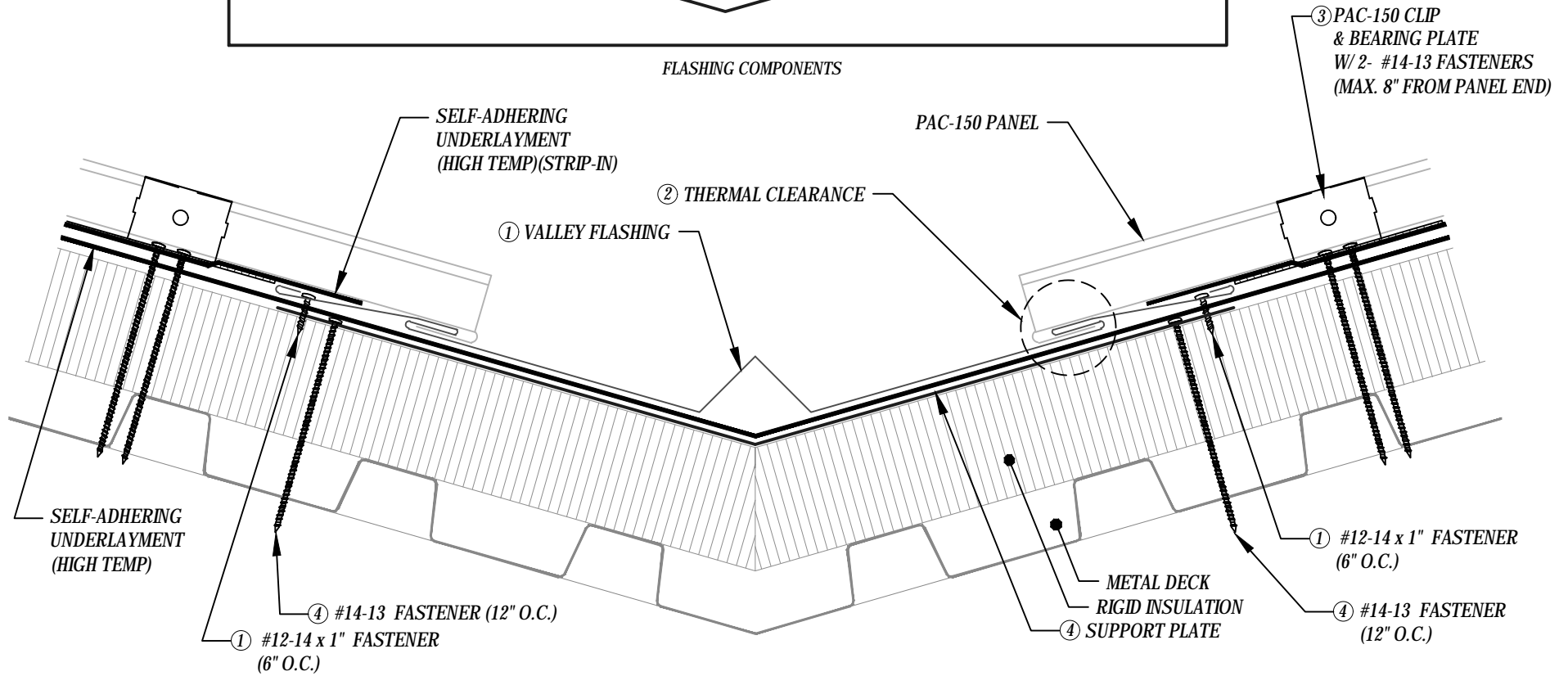


# PAC-150 FLASHING DETAILS - Metal Deck w/ ISO

# VALLEY DETAIL (One Piece)



FLASHING COMPONENTS



## KEYNOTES:

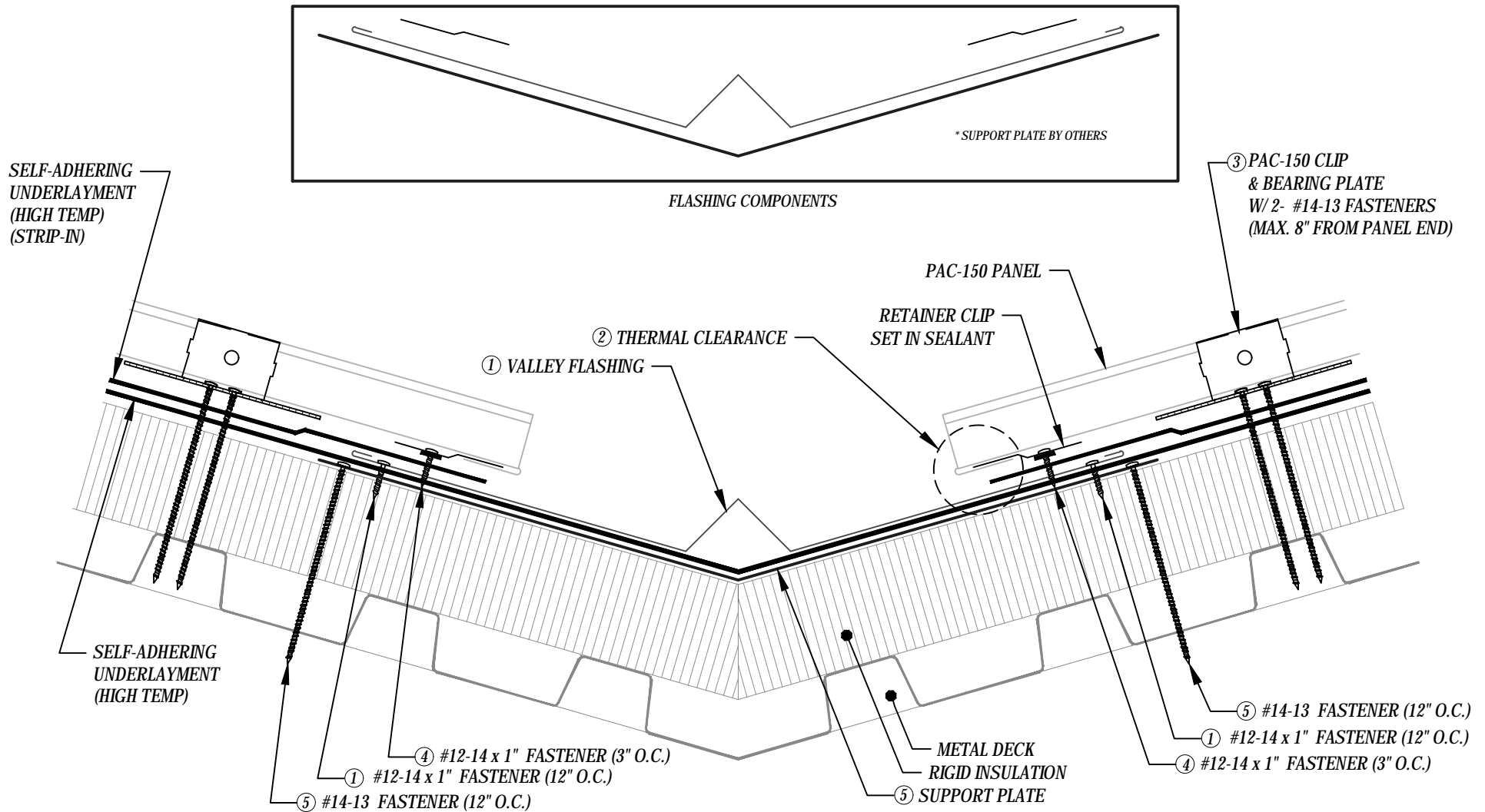
- TRIM AND SUPPORT PLATE FASTENERS ARE SELF-DRILL PANCAKE HEAD AND MUST BE INSTALLED IN A STAGGERED PATTERN.
- CLIPS, FASTENERS, AND SUPPORT PLATE MATERIAL: GALVANIZED WHEN STEEL PANELS ARE UTILIZED; STAINLESS STEEL WHEN ALUMINUM PANELS ARE UTILIZED.
- SUPPORT PLATE AND CLIP FASTENERS MUST BE OF SUFFICIENT LENGTH TO PENETRATE LOWEST FLUTE OF METAL DECK BY 5/8" MINIMUM THREAD LENGTH.

- ① VALLEY FLASHING FASTENED AT MAXIMUM 6" ON-CENTER SPACING.
- ② PANEL HEM THERMAL GAP CLEARANCE: MINIMUM 1 1/2" HEM WITH 1/2" CLEARANCE (CONSULT FACTORY).
- ③ FIRST PANEL CLIP TO BE LOCATED A **MAXIMUM OF 8" FROM PANEL END.**
- ④ SUPPORT PLATE: 20 GA. MINIMUM (IF WOOD NAILERS ARE PRESENT, SUPPORT PLATE IS NOT NEEDED)



# PAC-150 FLASHING DETAILS - Metal Deck w/ ISO

# VALLEY DETAIL (Clip)



**KEYNOTES:**

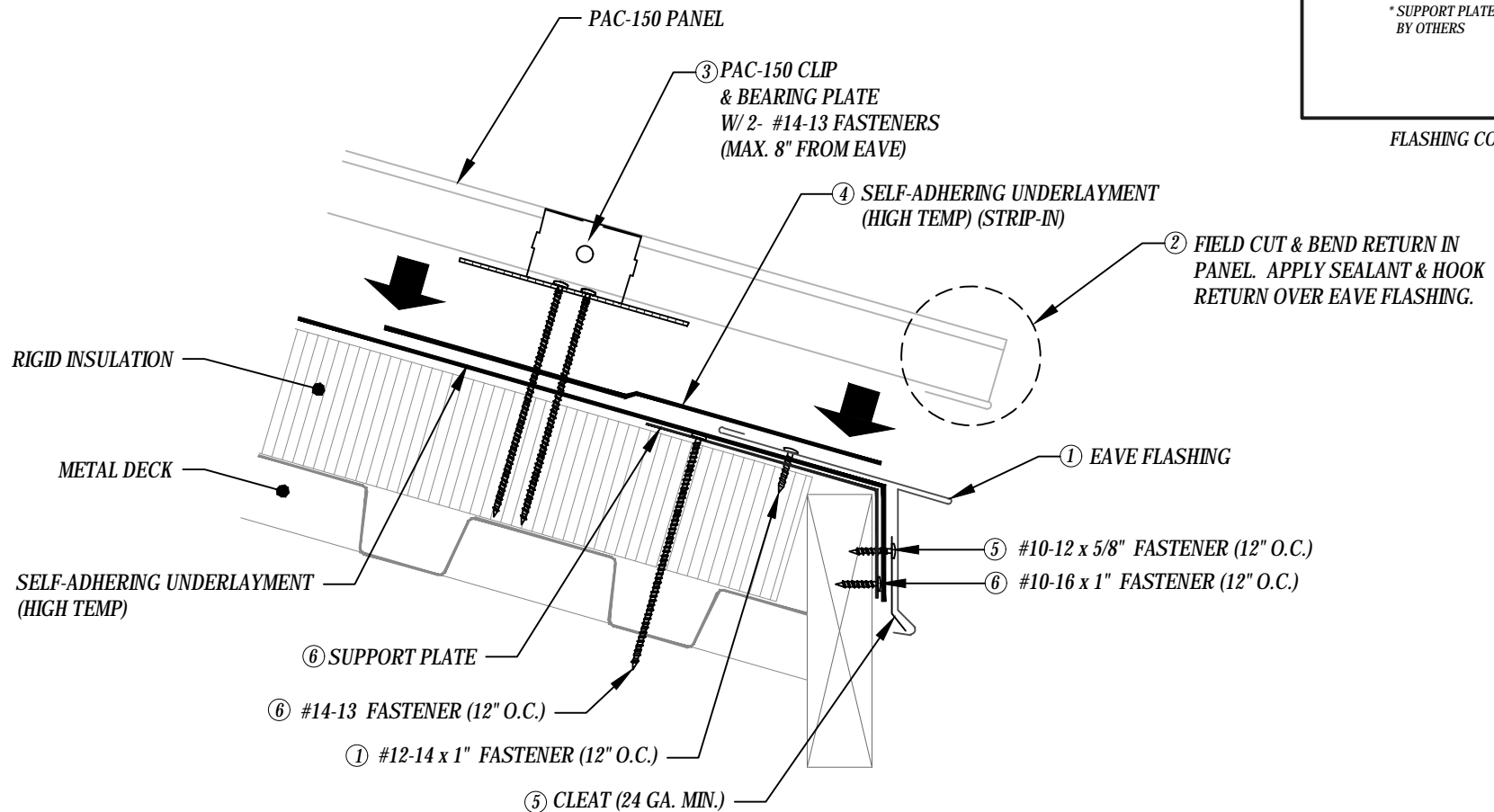
- TRIM AND SUPPORT PLATE FASTENERS ARE SELF-DRILL PANCAKE HEAD AND MUST BE INSTALLED IN A STAGGERED PATTERN.
- CLIPS, FASTENERS, AND SUPPORT PLATE MATERIAL: GALVANIZED WHEN STEEL PANELS ARE UTILIZED; STAINLESS STEEL WHEN ALUMINUM PANELS ARE UTILIZED.
- SUPPORT PLATE AND CLIP FASTENERS MUST BE OF SUFFICIENT LENGTH TO PENETRATE LOWEST FLUTE OF METAL DECK BY 5/8" MINIMUM THREAD LENGTH.

- ① VALLEY FLASHING FASTENED AT MAXIMUM 12" ON-CENTER SPACING.
- ② PANEL HEM THERMAL GAP CLEARANCE: MINIMUM 1 1/2" HEM WITH 1/2" CLEARANCE (CONSULT FACTORY).
- ③ FIRST PANEL CLIP TO BE LOCATED A **MAXIMUM OF 8" FROM PANEL END.**
- ④ RETAINER CLIP: FASTENED TO SUPPORT PLATE AT 3" O.C. STAGGERED PATTERN.
- ⑤ SUPPORT PLATE: 20 GA. MINIMUM (IF WOOD NAILERS ARE PRESENT, SUPPORT PLATE IS NOT NEEDED)



## PAC-150 FLASHING DETAILS - Metal Deck w/ ISO

# EAVE DETAIL



## KEYNOTES:

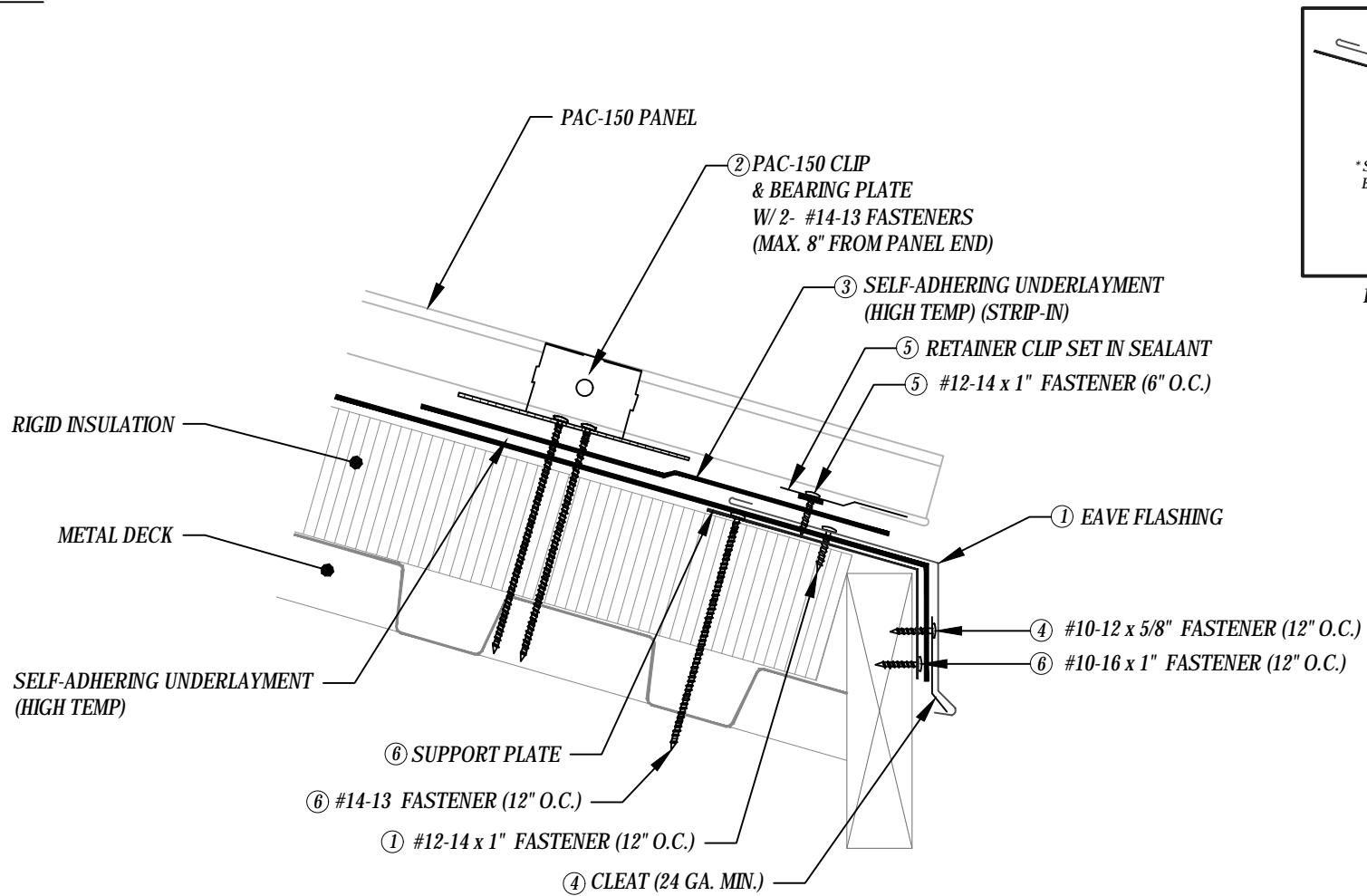
- TRIM AND SUPPORT PLATE FASTENERS ARE SELF-DRILL PANCAKE HEAD AND MUST BE INSTALLED IN A STAGGERED PATTERN.
- CLIPS, FASTENERS, AND SUPPORT PLATE MATERIAL: GALVANIZED WHEN STEEL PANELS ARE UTILIZED; STAINLESS STEEL WHEN ALUMINUM PANELS ARE UTILIZED.
- SUPPORT PLATE AND CLIP FASTENERS MUST BE OF SUFFICIENT LENGTH TO PENETRATE LOWEST FLUTE OF METAL DECK BY 5/8" MINIMUM THREAD LENGTH.

- ① EAVE FLASHING HEM EDGE: 1 1/2" MINIMUM.
- ② PANEL HEM AND THERMAL GAP CLEARANCE: MINIMUM 1 1/2" HEM WITH 1/2" CLEARANCE. (CONSULT FACTORY).
- ③ FIRST PANEL CLIP TO BE LOCATED A **MAXIMUM OF 8" FROM EAVE.**
- ④ ROOF SIDE FLANGE SHOULD BE STRIPPED IN WITH APPROVED UNDERLAYMENT.
- ⑤ CLEAT: 24 GA. MINIMUM.
- ⑥ SUPPORT PLATE: 20 GA. MINIMUM (IF WOOD NAILERS ARE PRESENT, SUPPORT PLATE IS NOT NEEDED)



# PAC-150 FLASHING DETAILS - Metal Deck w/ ISO

# EAVE DETAIL

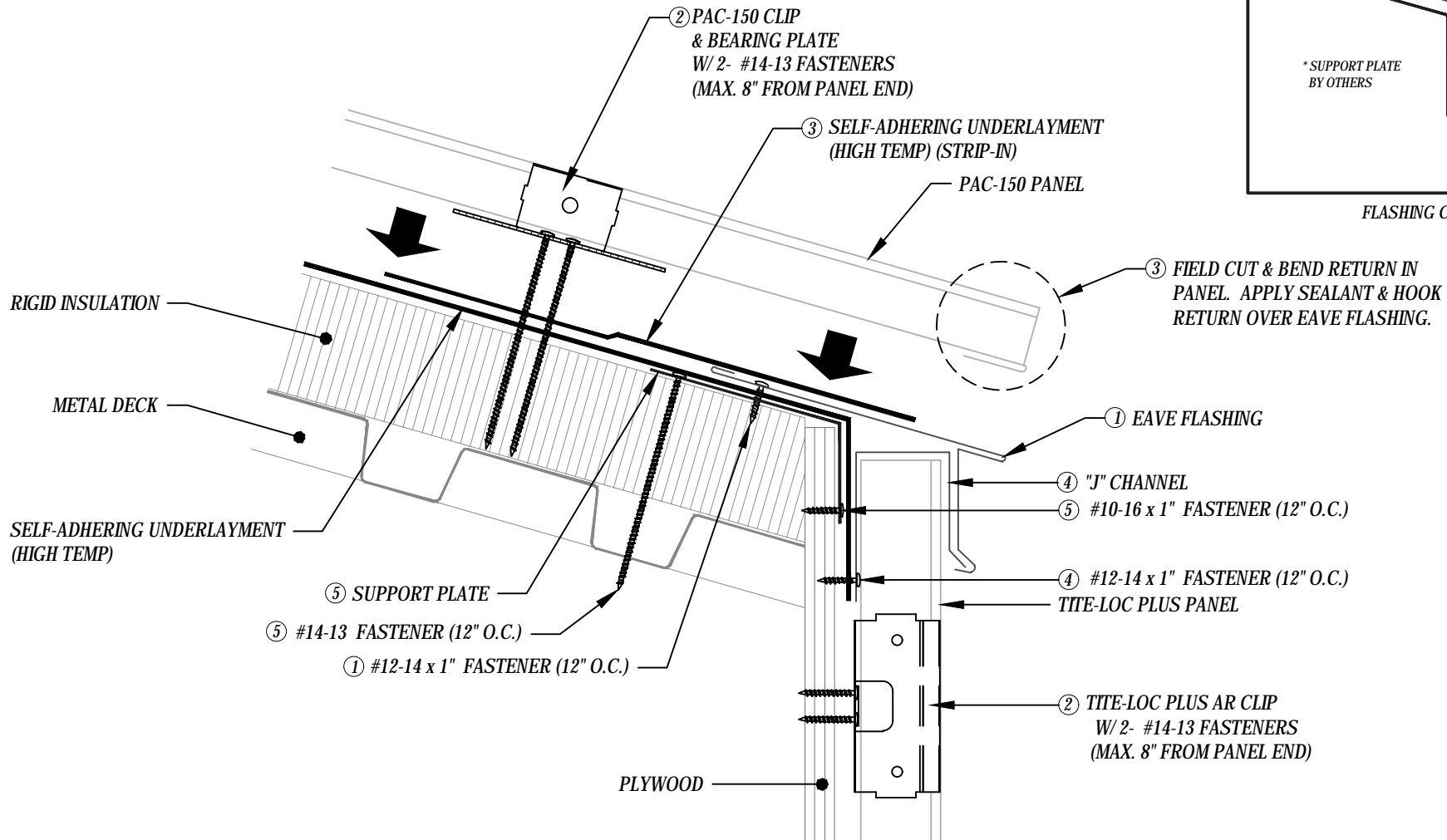


## KEYNOTES:

- TRIM AND SUPPORT PLATE FASTENERS ARE SELF-DRILL PANCAKE HEAD AND MUST BE INSTALLED IN A STAGGERED PATTERN.
  - CLIPS, FASTENERS, AND SUPPORT PLATE MATERIAL: GALVANIZED WHEN STEEL PANELS ARE UTILIZED; STAINLESS STEEL WHEN ALUMINUM PANELS ARE UTILIZED.
  - SUPPORT PLATE AND CLIP FASTENERS MUST BE OF SUFFICIENT LENGTH TO PENETRATE LOWEST FLUTE OF METAL DECK BY 5/8" MINIMUM THREAD LENGTH.
- ① EAVE FLASHING FASTENED AT 12" ON-CENTER MAXIMUM.
  - ② FIRST PANEL CLIP TO BE LOCATED A **MAXIMUM OF 8" FROM EAVE.**
  - ③ ROOF SIDE FLANGE SHOULD BE STRIPPED IN WITH APPROVED UNDERLAYMENT.
  - ④ CLEAT: 24 GA. MINIMUM.
  - ⑤ RETAINER CLIP: FASTENED TO SUPPORT PLATE AT 6" O.C. STAGGERED PATTERN.
  - ⑥ SUPPORT PLATE: 20 GA. MINIMUM (IF WOOD NAILERS ARE PRESENT, SUPPORT PLATE IS NOT NEEDED)



# EAVE w/ FASCIA DETAIL



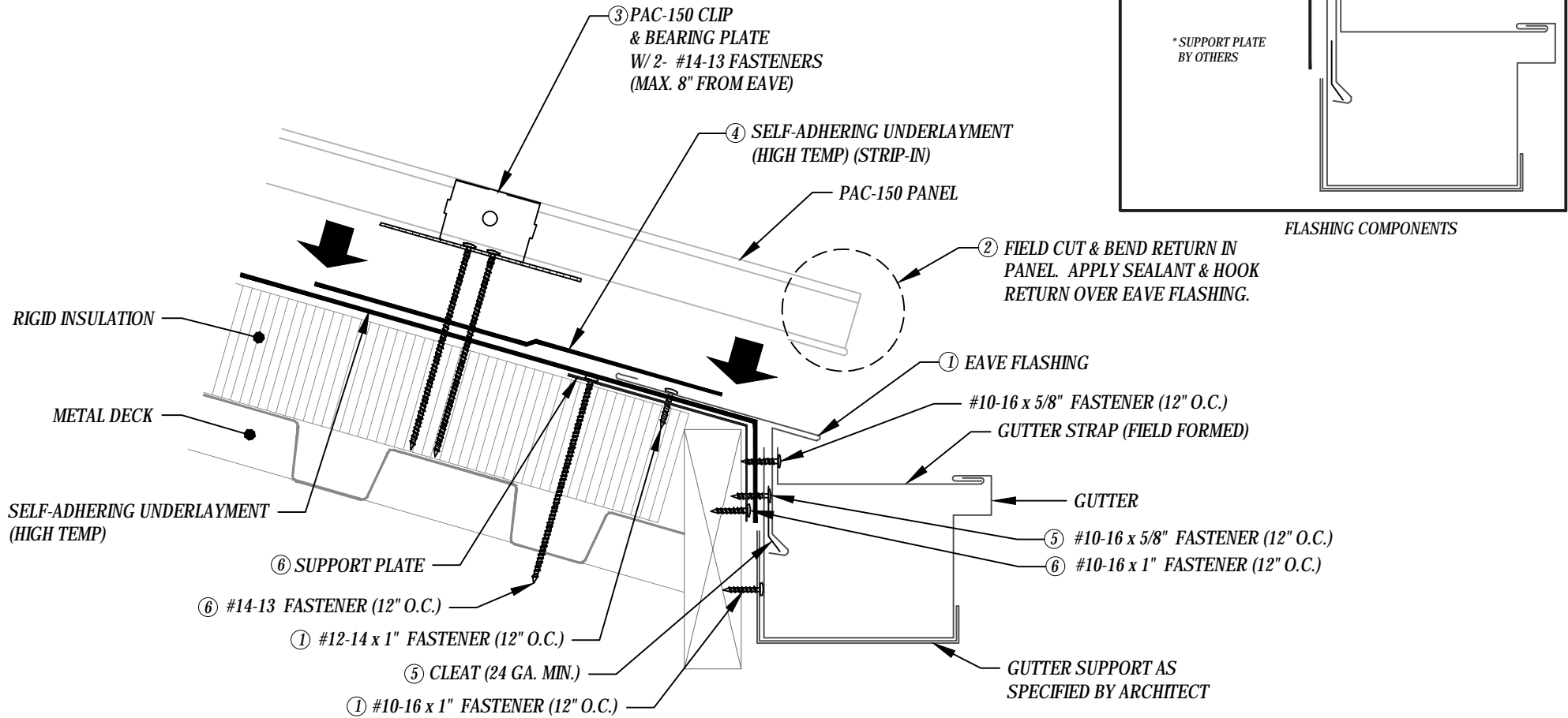
## KEYNOTES:

- TRIM AND SUPPORT PLATE FASTENERS ARE SELF-DRILL PANCAKE HEAD AND MUST BE INSTALLED IN A STAGGERED PATTERN.
- CLIPS, FASTENERS, AND SUPPORT PLATE MATERIAL: GALVANIZED WHEN STEEL PANELS ARE UTILIZED; STAINLESS STEEL WHEN ALUMINUM PANELS ARE UTILIZED.
- SUPPORT PLATE AND CLIP FASTENERS MUST BE OF SUFFICIENT LENGTH TO PENETRATE LOWEST FLUTE OF METAL DECK BY 5/8" MINIMUM THREAD LENGTH.

- ① EAVE FLASHING HEM EDGE: 1 1/2" MINIMUM.
- ② FIRST PANEL CLIP TO BE LOCATED A **MAXIMUM OF 8" FROM PANEL END.**
- ③ ROOF SIDE FLANGE SHOULD BE STRIPPED IN WITH APPROVED UNDERLAYMENT.
- ④ "J" CHANNEL: ATTACHED AT MAXIMUM 12" ON-CENTER.
- ⑤ SUPPORT PLATE: 20 GA. MINIMUM (IF WOOD NAILERS ARE PRESENT, SUPPORT PLATE IS NOT NEEDED)



# EAVE DETAIL W/ GUTTER



## KEYNOTES:

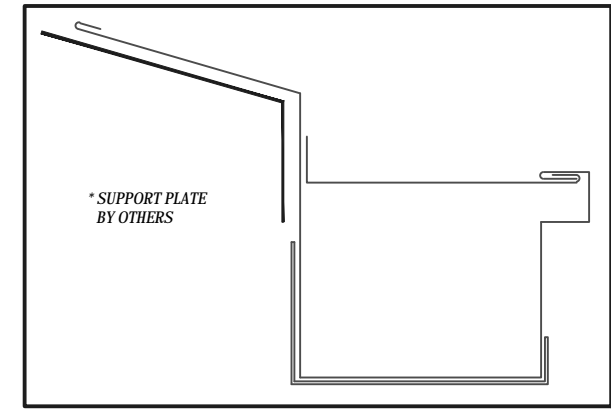
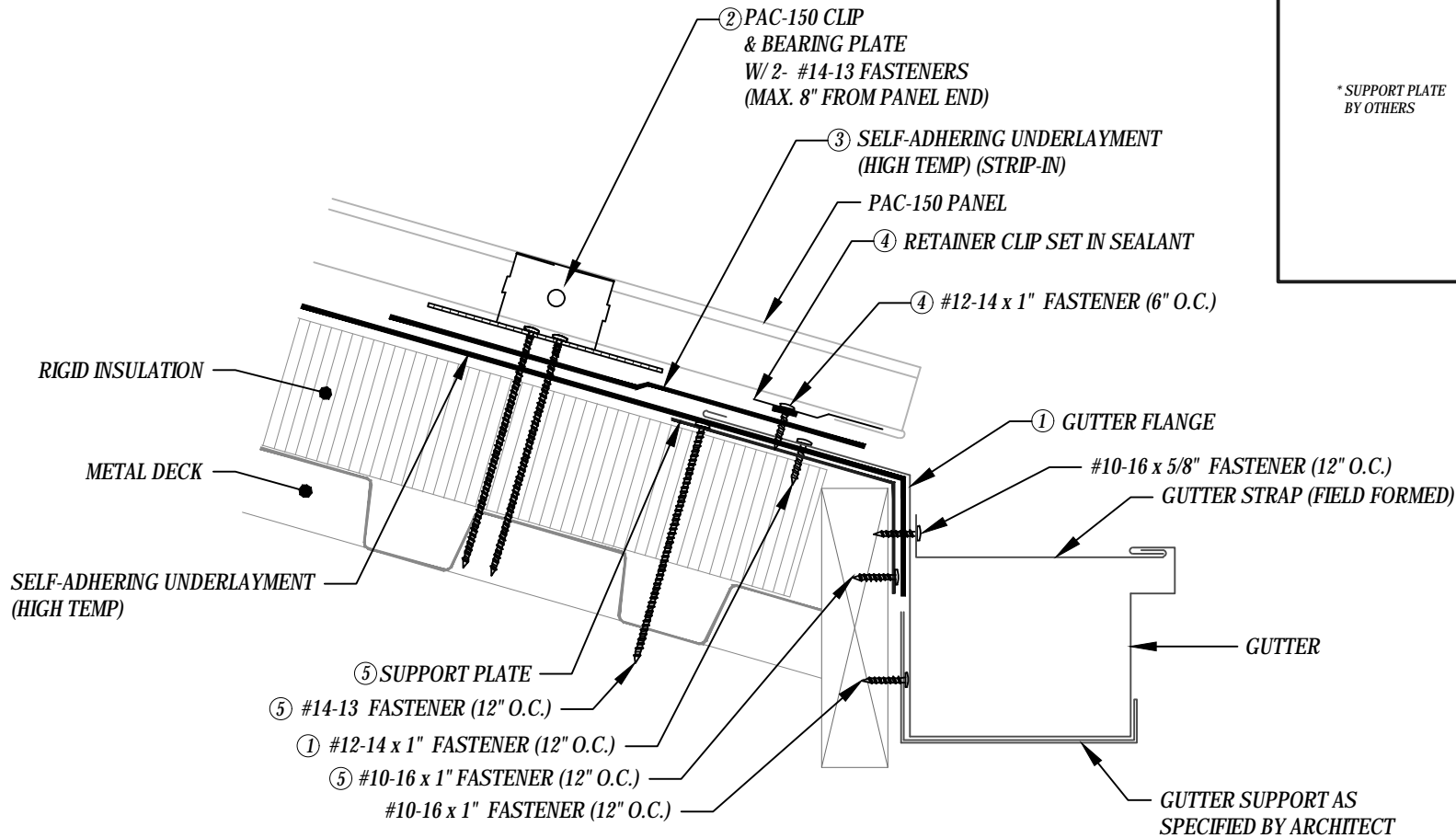
- TRIM AND SUPPORT PLATE FASTENERS ARE SELF-DRILL PANCAKE HEAD AND MUST BE INSTALLED IN A STAGGERED PATTERN.
  - CLIPS, FASTENERS, AND SUPPORT PLATE MATERIAL: GALVANIZED WHEN STEEL PANELS ARE UTILIZED; STAINLESS STEEL WHEN ALUMINUM PANELS ARE UTILIZED.
  - SUPPORT PLATE AND CLIP FASTENERS MUST BE OF SUFFICIENT LENGTH TO PENETRATE LOWEST FLUTE OF METAL DECK BY 5/8" MINIMUM THREAD LENGTH.
- ① EAVE FLASHING HEM EDGE: 1 1/2" MINIMUM.
  - ② PANEL HEM AND THERMAL GAP CLEARANCE: MINIMUM 1 1/2" HEM WITH 1/2" CLEARANCE. (CONSULT FACTORY).
  - ③ FIRST PANEL CLIP TO BE LOCATED A **MAXIMUM OF 8" FROM EAVE**.
  - ④ ROOF SIDE FLANGE SHOULD BE STRIPPED IN WITH APPROVED UNDERLAYMENT.
  - ⑤ CLEAT: 24 GA. MINIMUM.
  - ⑥ SUPPORT PLATE: 20 GA. MINIMUM (IF WOOD NAILERS ARE PRESENT, SUPPORT PLATE IS NOT NEEDED)



# PAC-150 FLASHING DETAILS - Metal Deck w/ ISO



# EAVE DETAIL W/ GUTTER



FLASHING COMPONENTS

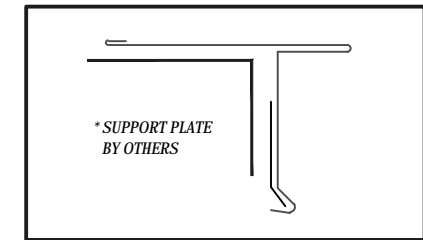
## KEYNOTES:

- TRIM AND SUPPORT PLATE FASTENERS ARE SELF-DRILL PANCAKE HEAD AND MUST BE INSTALLED IN A STAGGERED PATTERN.
- CLIPS, FASTENERS, AND SUPPORT PLATE MATERIAL: GALVANIZED WHEN STEEL PANELS ARE UTILIZED; STAINLESS STEEL WHEN ALUMINUM PANELS ARE UTILIZED.
- SUPPORT PLATE AND CLIP FASTENERS MUST BE OF SUFFICIENT LENGTH TO PENETRATE LOWEST FLUTE OF METAL DECK BY 5/8" MINIMUM THREAD LENGTH.

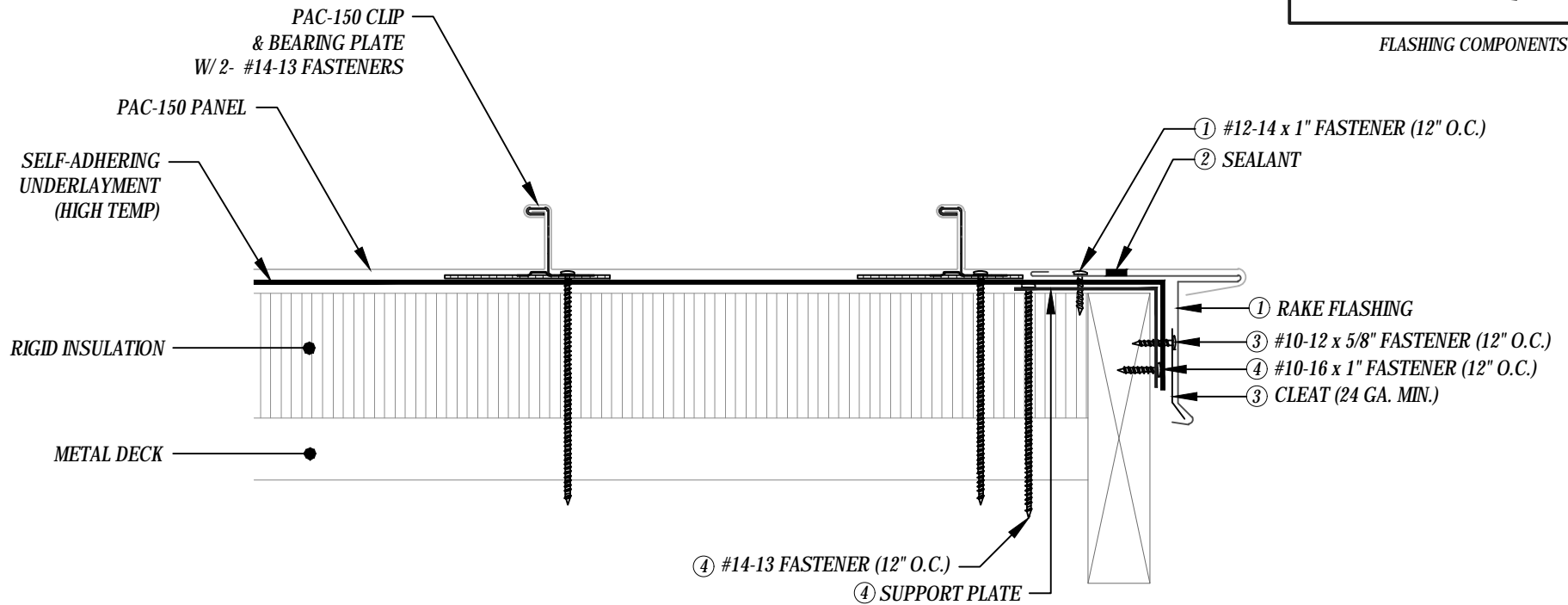
- ① GUTTER FLANGE FASTENED AT MAXIMUM 12" ON-CENTER, STAGGERED PATTERN.
- ② FIRST PANEL CLIP TO BE LOCATED A **MAXIMUM OF 8" FROM EAVE.**
- ③ ROOF SIDE FLANGE SHOULD BE STRIPPED IN WITH APPROVED UNDERLAYMENT.
- ④ RETAINER CLIP: FASTENED TO SUPPORT PLATE AT 6" O.C., STAGGERED PATTERN.
- ⑤ SUPPORT PLATE: 20 GA. MINIMUM (IF WOOD NAILERS ARE PRESENT, SUPPORT PLATE IS NOT NEEDED)



# RAKE DETAIL



FLASHING COMPONENTS



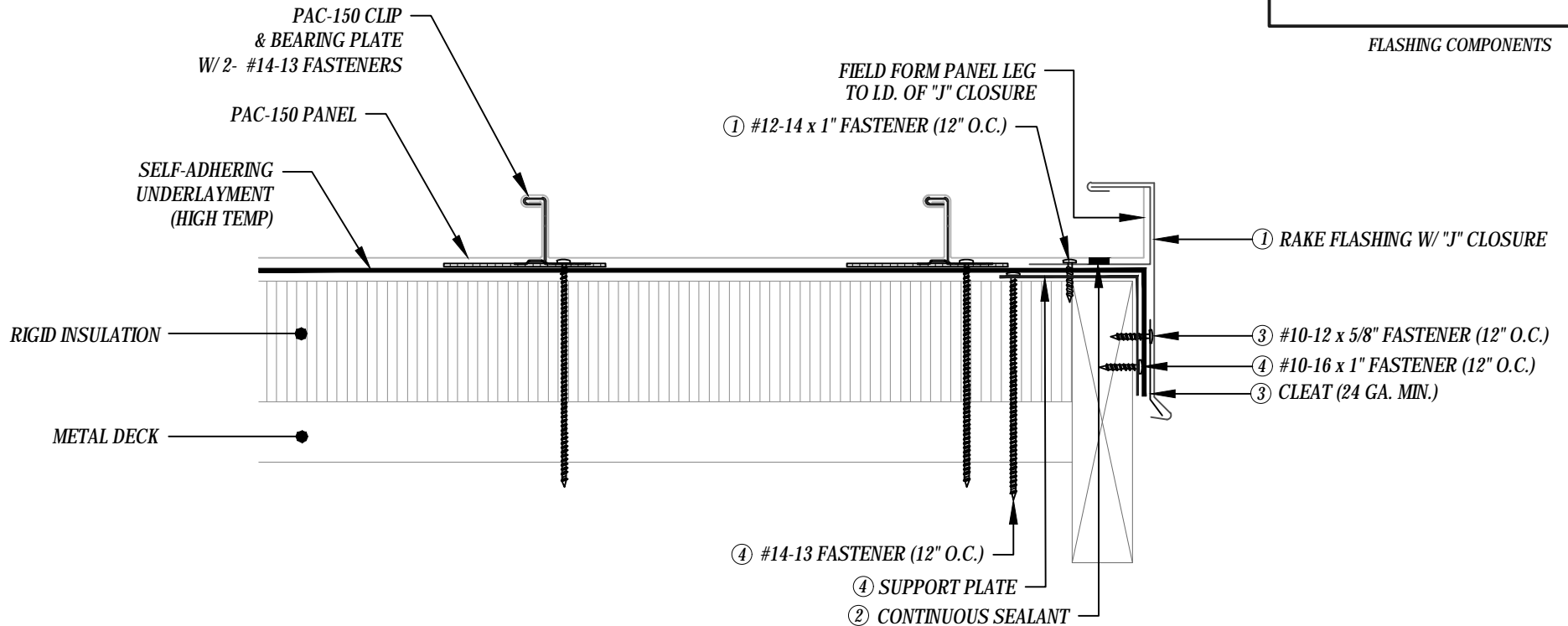
## KEYNOTES:

- TRIM AND SUPPORT PLATE FASTENERS ARE SELF-DRILL PANCAKE HEAD AND MUST BE INSTALLED IN A STAGGERED PATTERN.
  - CLIPS, FASTENERS, AND SUPPORT PLATE MATERIAL: GALVANIZED WHEN STEEL PANELS ARE UTILIZED; STAINLESS STEEL WHEN ALUMINUM PANELS ARE UTILIZED.
  - SUPPORT PLATE AND CLIP FASTENERS MUST BE OF SUFFICIENT LENGTH TO PENETRATE LOWEST FLUTE OF METAL DECK BY 5/8" MINIMUM THREAD LENGTH.
- ① RAKE FLASHING:
- HEMMED DIMENSION: 1 1/2" MINIMUM; 2" MAXIMUM
  - DECK SIDE LEG SHOULD BE A MINIMUM OF 5" LONG WITH FASTENER LOCATED 2" MAXIMUM FROM EDGE.
  - PANEL HEM SHOULD BE CLOSED SECURELY TO HEM LEG OF RAKE FLASHING
- ② SEALANT CAN BE TUBE OR TAPE SEALANT AND MUST BE CONTINUOUS.
- ③ CLEAT: 24 GA. MINIMUM.
- ④ SUPPORT PLATE: 20 GA. MINIMUM (IF WOOD NAILERS ARE PRESENT, SUPPORT PLATE IS NOT NEEDED)



# PAC-150 FLASHING DETAILS - Metal Deck w/ ISO

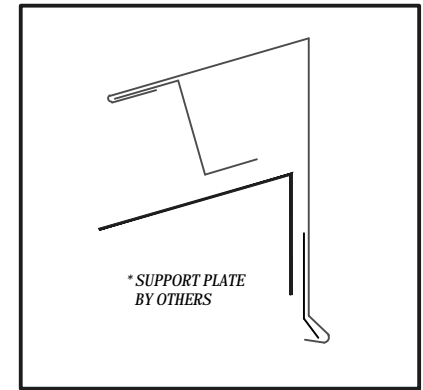
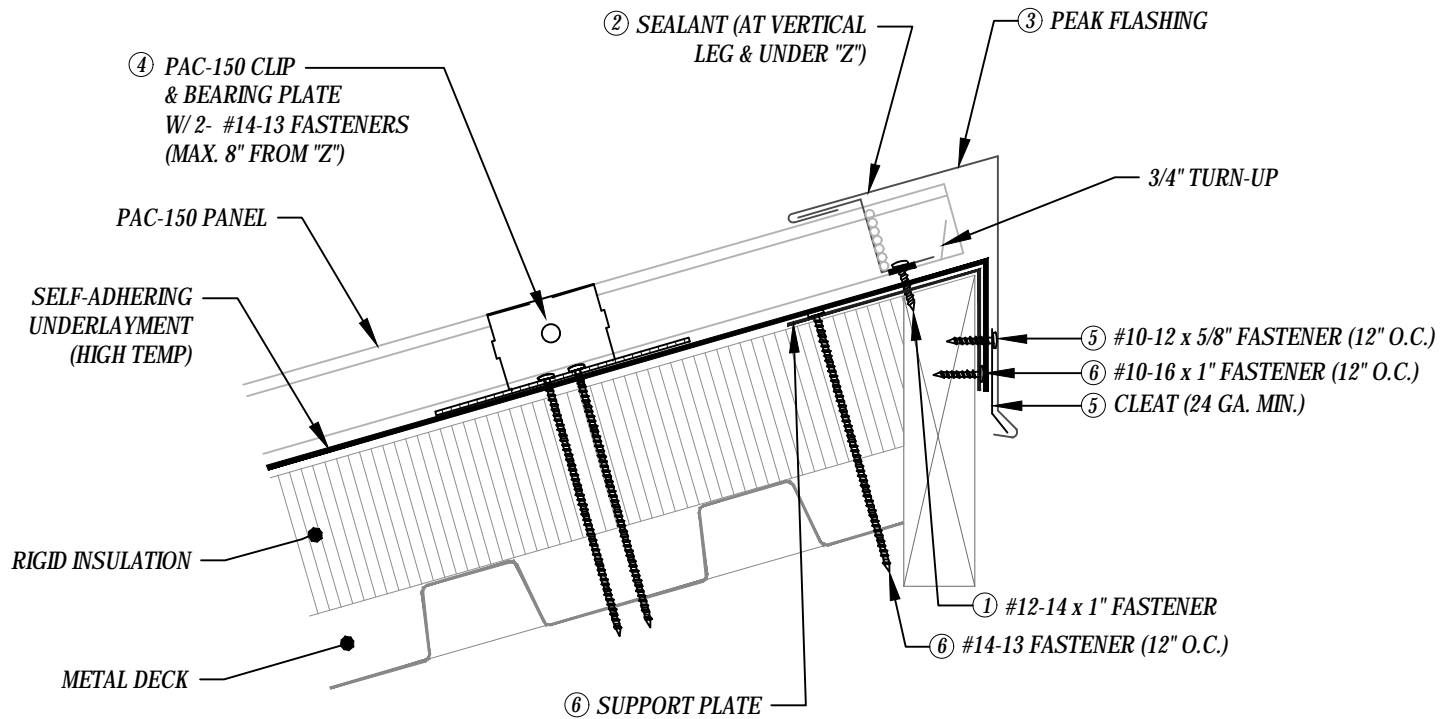
# RAKE DETAIL W/ "J" CLOSURE



## KEYNOTES:

- TRIM AND SUPPORT PLATE FASTENERS ARE SELF-DRILL PANCAKE HEAD AND MUST BE INSTALLED IN A STAGGERED PATTERN.
  - CLIPS, FASTENERS, AND SUPPORT PLATE MATERIAL: GALVANIZED WHEN STEEL PANELS ARE UTILIZED; STAINLESS STEEL WHEN ALUMINUM PANELS ARE UTILIZED.
  - SUPPORT PLATE AND CLIP FASTENERS MUST BE OF SUFFICIENT LENGTH TO PENETRATE LOWEST FLUTE OF METAL DECK BY 5/8" MINIMUM THREAD LENGTH.
- ① RAKE FLASHING:
- PANEL LEG MUST BE FORMED TO WITHIN 1/8" OF J-CHANNEL WEB.
  - DECK SIDE LEG SHOULD BE A MINIMUM OF 3" LONG WITH FASTENER LOCATED 2" MAXIMUM FROM EDGE.
  - J-CHANNEL FORMED TO HEIGHT OF PANEL RIB.
- ② SEALANT CAN BE TUBE OR TAPE SEALANT AND MUST BE CONTINUOUS.
- ③ CLEAT: 24 GA. MINIMUM.
- ④ SUPPORT PLATE: 20 GA. MINIMUM (IF WOOD NAILERS ARE PRESENT, SUPPORT PLATE IS NOT NEEDED)

# PEAK DETAIL



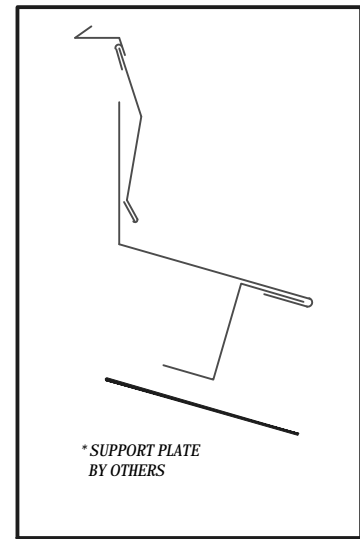
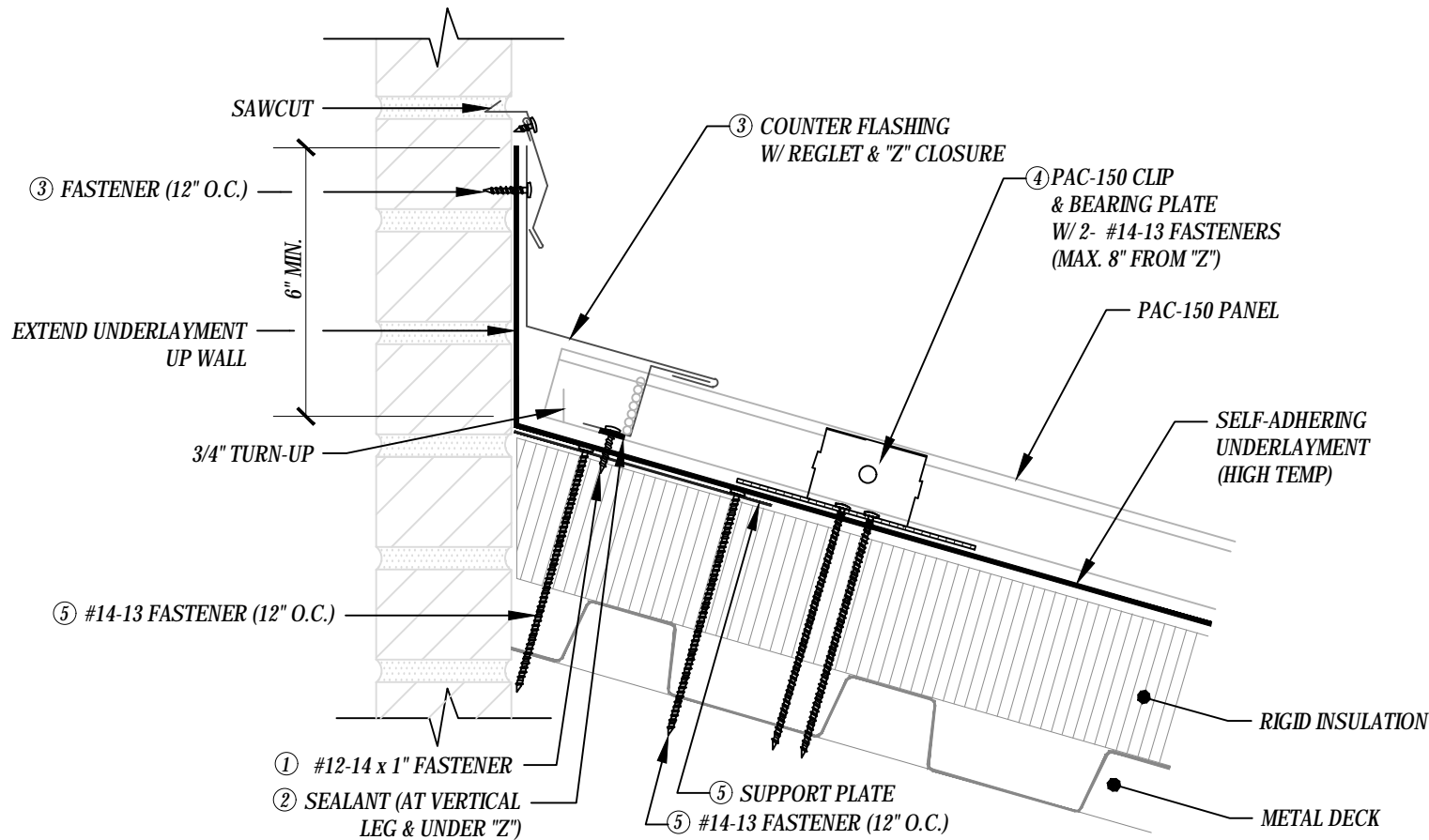
FLASHING COMPONENTS

## KEYNOTES:

- TRIM AND SUPPORT PLATE FASTENERS ARE SELF-DRILL PANCAKE HEAD AND MUST BE INSTALLED IN A STAGGERED PATTERN.
- CLIPS, FASTENERS, AND SUPPORT PLATE MATERIAL: GALVANIZED WHEN STEEL PANELS ARE UTILIZED; STAINLESS STEEL WHEN ALUMINUM PANELS ARE UTILIZED.
- SUPPORT PLATE AND CLIP FASTENERS MUST BE OF SUFFICIENT LENGTH TO PENETRATE LOWEST FLUTE OF METAL DECK BY 5/8" MINIMUM THREAD LENGTH.

- ① "Z" COMPONENT
  - MINIMUM HEIGHT: 1/8" CLEARANCE OF PANEL RIB
  - FASTENED AS FOLLOWS: 12" & 16" PANELS (4 FASTENERS PER PANEL MINIMUM); 18" PANELS (6 FASTENERS PER PANEL MINIMUM)
  - FASTENING LEG: 1 1/4" MINIMUM TOP LEG: 1 1/2" MINIMUM
  - "Z" MUST BE CUT TO TIGHT FIT OF PANEL DIMENSION: 1/8" MAXIMUM GAP
- ② SEALANT
  - TUBE OR TAPE SEALANT IS ACCEPTABLE BELOW THE "Z"
  - TUBE SEALANT PLACED AT BACKSIDE OF VERTICAL LEGS
  - 1" TAPE WIDTH OR 1/2" BEAD WIDTH PRIOR TO COMPRESSION
- ③ PEAK FLASHING: HEMMED 1" AND FULLY ENGAGED TO "Z" CLOSURE.
- ④ FIRST PANEL CLIP TO BE LOCATED A MAXIMUM OF 8" FROM "Z" COMPONENT.
- ⑤ CLEAT: 24 GA. MINIMUM.
- ⑥ SUPPORT PLATE: 20 GA. MINIMUM (IF WOOD NAILERS ARE PRESENT, SUPPORT PLATE IS NOT NEEDED)

# HEADWALL DETAIL W/ RECEIVER

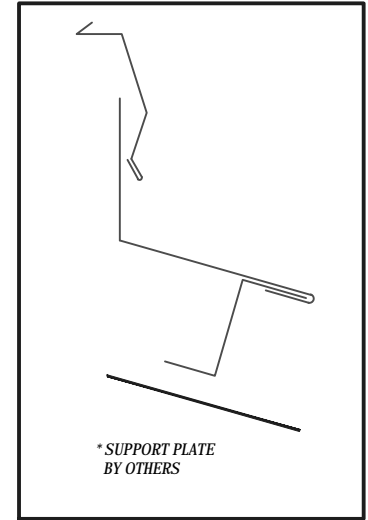
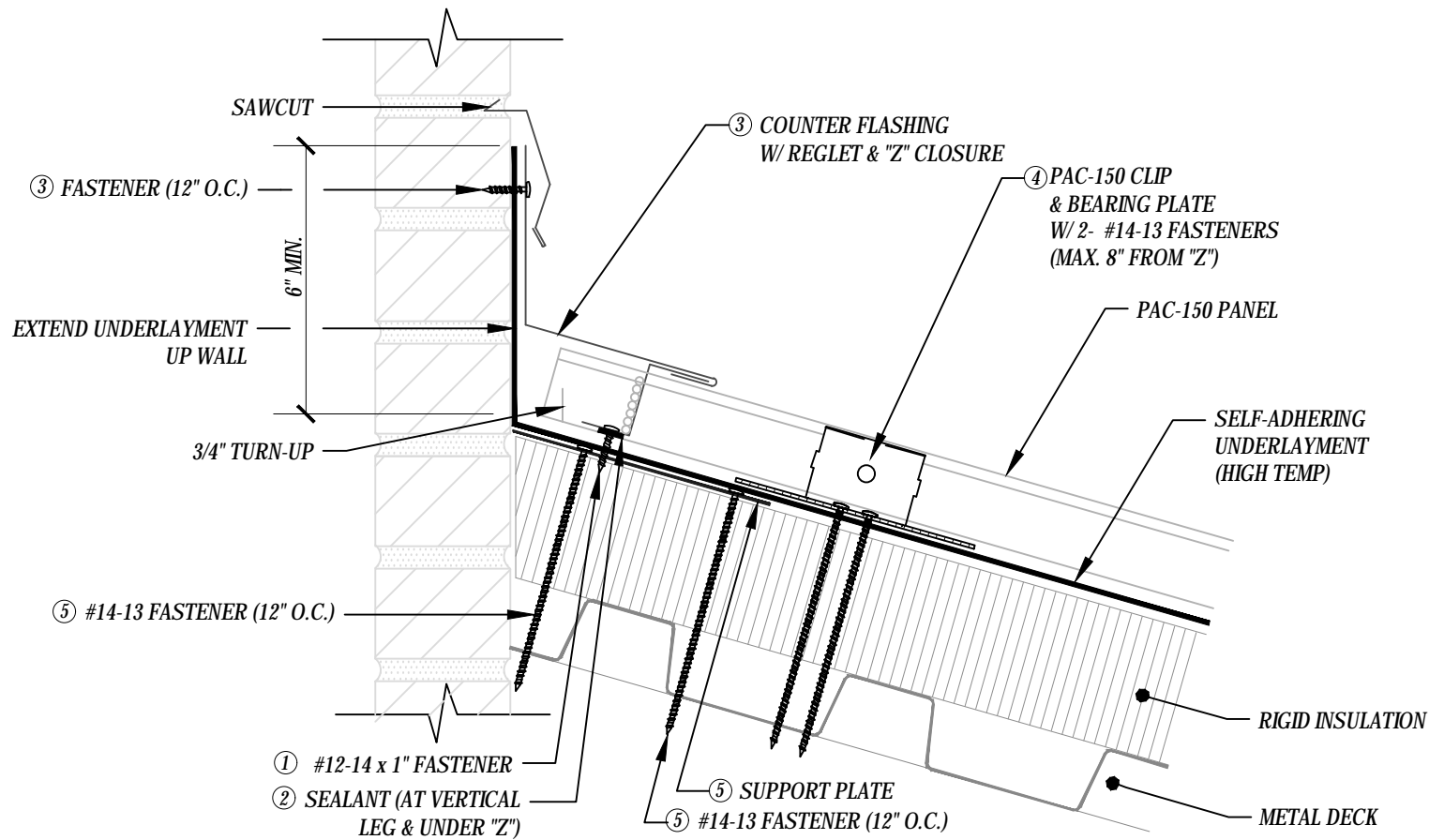


FLASHING COMPONENTS

## KEYNOTES:

- TRIM AND SUPPORT PLATE FASTENERS ARE SELF-DRILL PANCAKE HEAD AND MUST BE INSTALLED IN A STAGGERED PATTERN.
  - CLIPS, FASTENERS, AND SUPPORT PLATE MATERIAL: GALVANIZED WHEN STEEL PANELS ARE UTILIZED; STAINLESS STEEL WHEN ALUMINUM PANELS ARE UTILIZED.
  - SUPPORT PLATE AND CLIP FASTENERS MUST BE OF SUFFICIENT LENGTH TO PENETRATE LOWEST FLUTE OF METAL DECK BY 5/8" MINIMUM THREAD LENGTH.
- ① "Z" COMPONENT
    - MINIMUM HEIGHT: 1/8" CLEARANCE OF PANEL RIB
    - FASTENED AS FOLLOWS: 12" & 16" PANELS (4 FASTENERS PER PANEL MINIMUM); 18" PANELS (6 FASTENERS PER PANEL MINIMUM)
    - FASTENING LEG: 1 1/4" MINIMUM TOP LEG: 1 1/2" MINIMUM
    - "Z" MUST BE CUT TO TIGHT FIT OF PANEL DIMENSION: **1/8" MAXIMUM GAP**
  - ② SEALANT
    - TUBE OR TAPE SEALANT IS ACCEPTABLE BELOW THE "Z"
    - TUBE SEALANT PLACED AT BACKSIDE OF VERTICAL LEGS
    - 1" TAPE WIDTH OR 1/2" BEAD WIDTH PRIOR TO COMPRESSION
  - ③ COUNTER FLASHING: HEMMED 1" AND FULLY ENGAGED TO "Z" CLOSURE.
  - ④ FIRST PANEL CLIP TO BE LOCATED A **MAXIMUM OF 8" FROM "Z" COMPONENT.**
  - ⑤ SUPPORT PLATE: 20 GA. MINIMUM (IF WOOD NAILERS ARE PRESENT, SUPPORT PLATE IS NOT NEEDED)

# HEADWALL DETAIL



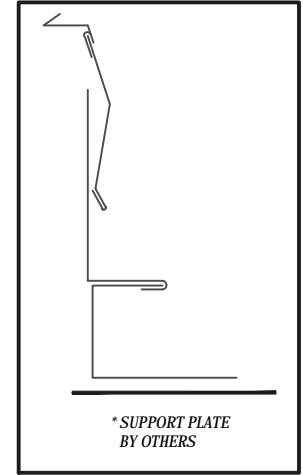
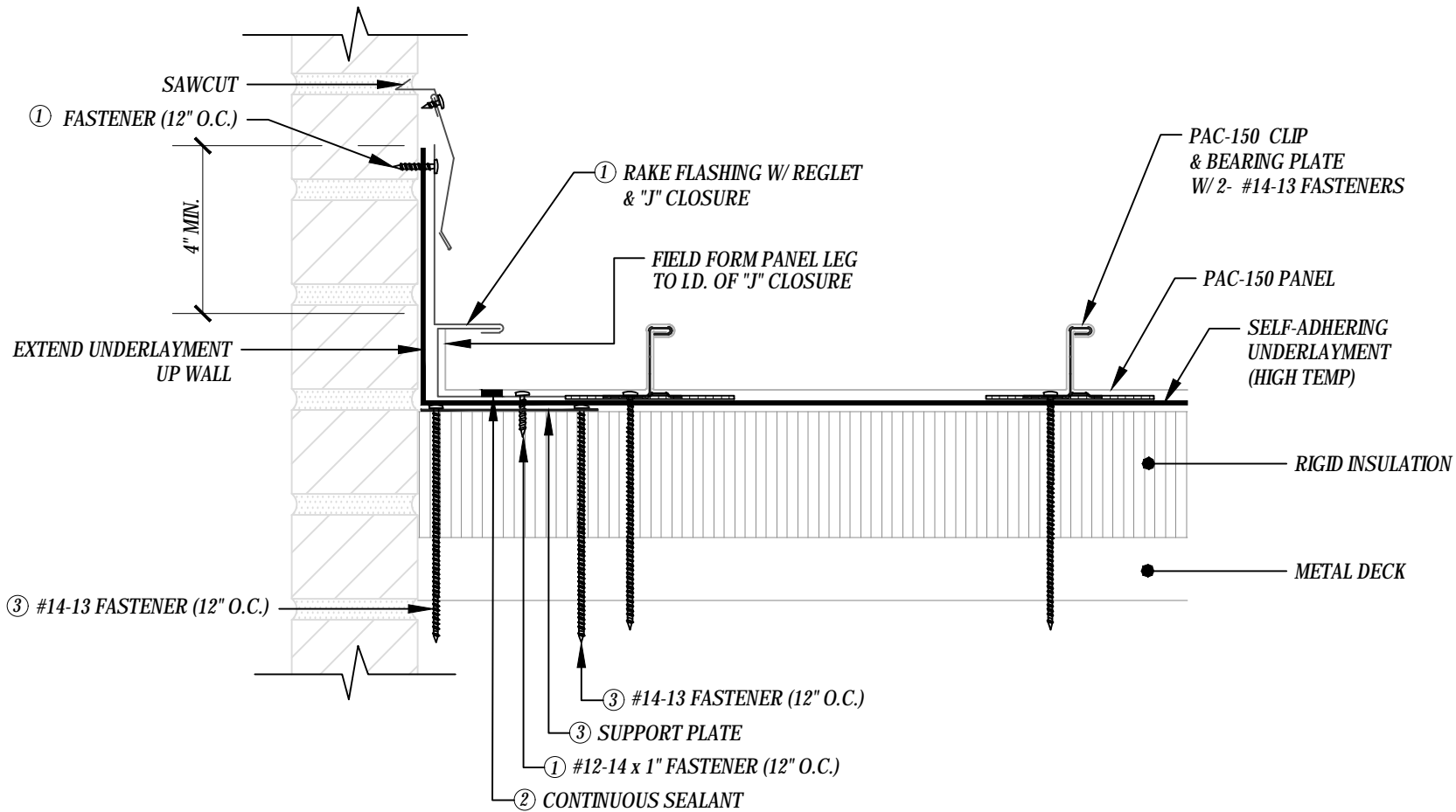
FLASHING COMPONENTS

## KEYNOTES:

- TRIM AND SUPPORT PLATE FASTENERS ARE SELF-DRILL PANCAKE HEAD AND MUST BE INSTALLED IN A STAGGERED PATTERN.
  - CLIPS, FASTENERS, AND SUPPORT PLATE MATERIAL: GALVANIZED WHEN STEEL PANELS ARE UTILIZED; STAINLESS STEEL WHEN ALUMINUM PANELS ARE UTILIZED.
  - SUPPORT PLATE AND CLIP FASTENERS MUST BE OF SUFFICIENT LENGTH TO PENETRATE LOWEST FLUTE OF METAL DECK BY 5/8" MINIMUM THREAD LENGTH.
- ① "Z" COMPONENT
    - MINIMUM HEIGHT: 1/8" CLEARANCE OF PANEL RIB
    - FASTENED AS FOLLOWS: 12" & 16" PANELS (4 FASTENERS PER PANEL MINIMUM); 18" PANELS (6 FASTENERS PER PANEL MINIMUM)
    - FASTENING LEG: 1 1/4" MINIMUM TOP LEG: 1 1/2" MINIMUM
    - "Z" MUST BE CUT TO TIGHT FIT OF PANEL DIMENSION: **1/8" MAXIMUM GAP**
  - ② SEALANT
    - TUBE OR TAPE SEALANT IS ACCEPTABLE BELOW THE "Z"
    - TUBE SEALANT PLACED AT BACKSIDE OF VERTICAL LEGS
    - 1" TAPE WIDTH OR 1/2" BEAD WIDTH PRIOR TO COMPRESSION
  - ③ COUNTER FLASHING: HEMMED 1" AND FULLY ENGAGED TO "Z" CLOSURE.
  - ④ FIRST PANEL CLIP TO BE LOCATED A **MAXIMUM OF 8" FROM "Z" COMPONENT.**
  - ⑤ SUPPORT PLATE: 20 GA. MINIMUM (IF WOOD NAILERS ARE PRESENT, SUPPORT PLATE IS NOT NEEDED)



# RAKE WALL DETAIL W/ RECEIVER



FLASHING COMPONENTS

## KEYNOTES:

- TRIM AND SUPPORT PLATE FASTENERS ARE SELF-DRILL PANCAKE HEAD AND MUST BE INSTALLED IN A STAGGERED PATTERN.
- CLIPS, FASTENERS, AND SUPPORT PLATE MATERIAL: GALVANIZED WHEN STEEL PANELS ARE UTILIZED; STAINLESS STEEL WHEN ALUMINUM PANELS ARE UTILIZED.
- SUPPORT PLATE AND CLIP FASTENERS MUST BE OF SUFFICIENT LENGTH TO PENETRATE LOWEST FLUTE OF METAL DECK BY 5/8" MINIMUM THREAD LENGTH.

### ① RAKE FLASHING:

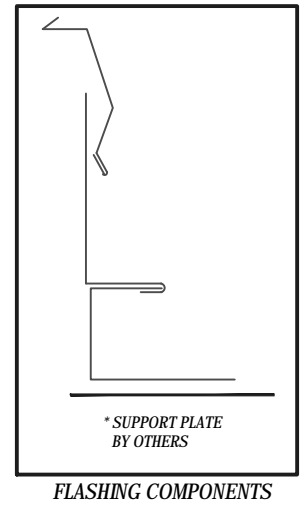
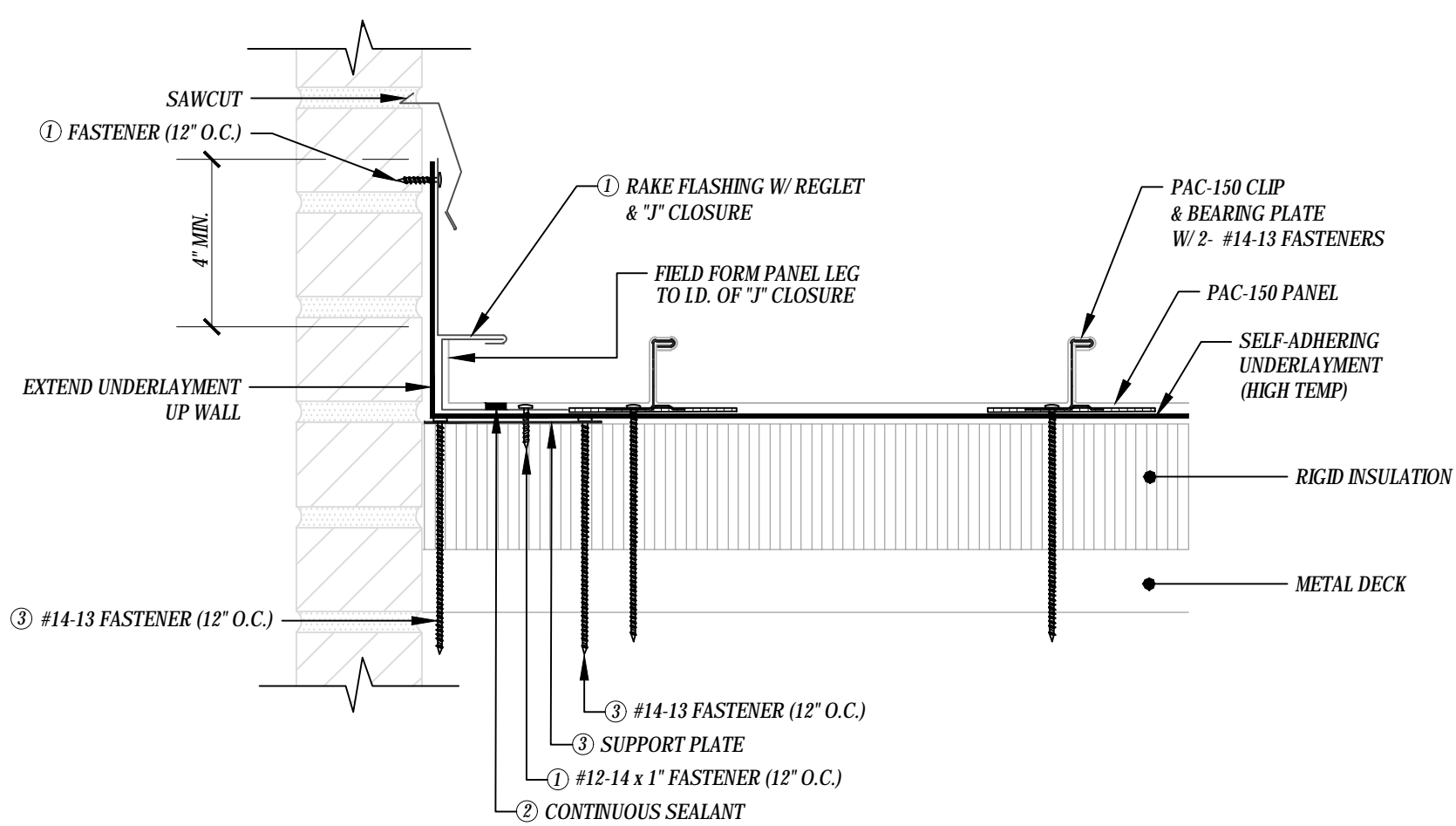
- PANEL LEG MUST BE FORMED TO WITHIN 1/8" OF J-CHANNEL WEB.
- DECK SIDE LEG SHOULD BE A MINIMUM OF 3" LONG WITH FASTENER LOCATED 2" MAXIMUM FROM EDGE.
- J-CHANNEL FORMED TO HEIGHT OF PANEL RIB.

### ② SEALANT CAN BE TUBE OR TAPE SEALANT AND MUST BE CONTINUOUS.

### ③ SUPPORT PLATE: 20 GA. MINIMUM (IF WOOD NAILERS ARE PRESENT, SUPPORT PLATE IS NOT NEEDED)



# RAKE WALL DETAIL



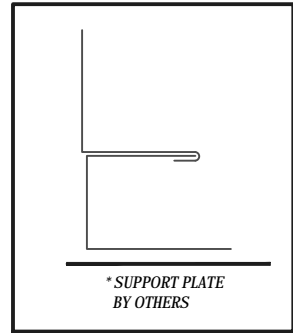
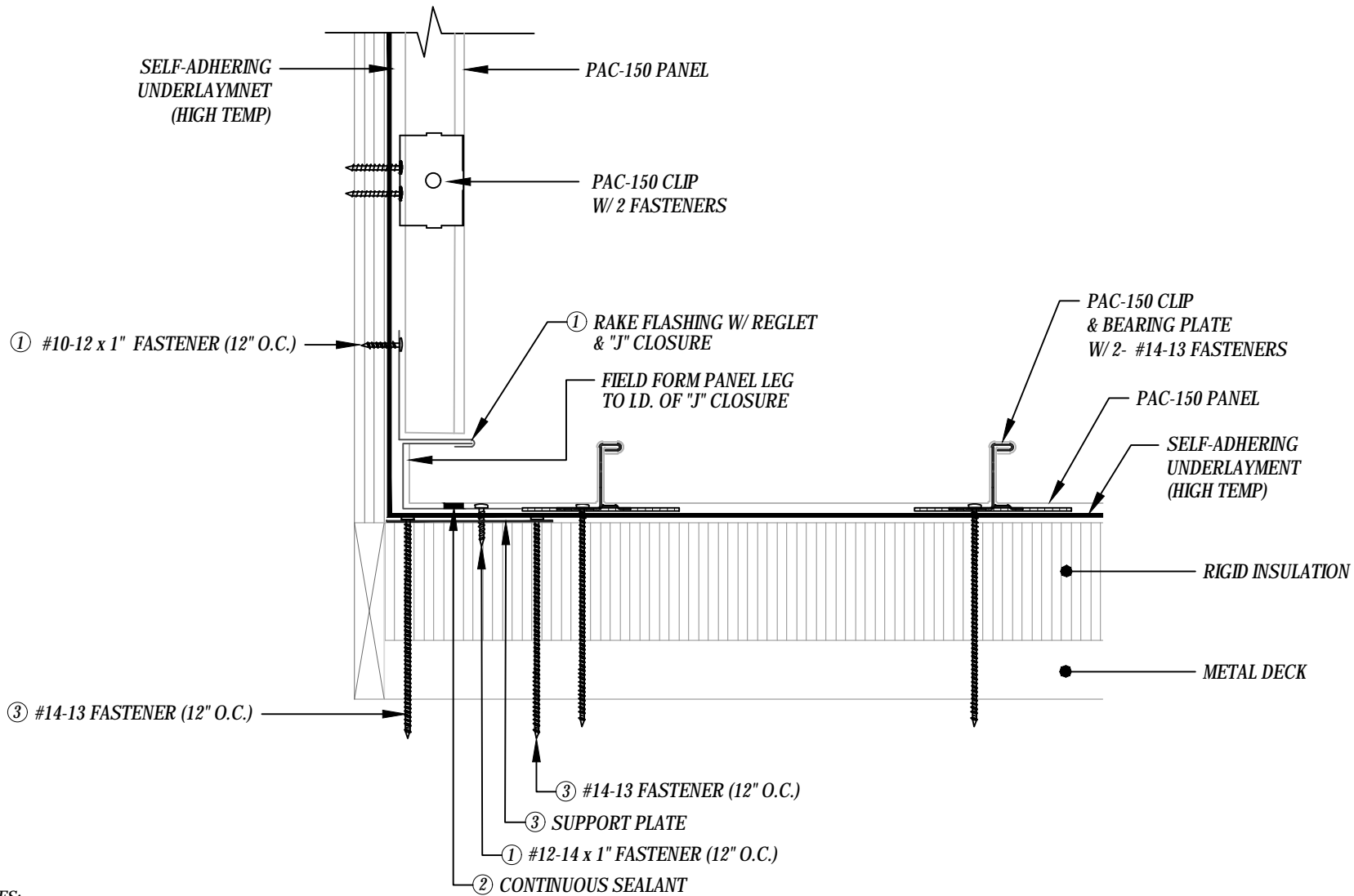
## KEYNOTES:

- TRIM AND SUPPORT PLATE FASTENERS ARE SELF-DRILL PANCAKE HEAD AND MUST BE INSTALLED IN A STAGGERED PATTERN.
  - CLIPS, FASTENERS, AND SUPPORT PLATE MATERIAL: GALVANIZED WHEN STEEL PANELS ARE UTILIZED; STAINLESS STEEL WHEN ALUMINUM PANELS ARE UTILIZED.
  - SUPPORT PLATE AND CLIP FASTENERS MUST BE OF SUFFICIENT LENGTH TO PENETRATE LOWEST FLUTE OF METAL DECK BY 5/8" MINIMUM THREAD LENGTH.
- ① RAKE FLASHING:
    - PANEL LEG MUST BE FORMED TO WITHIN 1/8" OF J-CHANNEL WEB.
    - DECK SIDE LEG SHOULD BE A MINIMUM OF 3" LONG WITH FASTENER LOCATED 2" MAXIMUM FROM EDGE.
    - J-CHANNEL FORMED TO HEIGHT OF PANEL RIB.
  - ② SEALANT CAN BE TUBE OR TAPE SEALANT AND MUST BE CONTINUOUS.
  - ③ SUPPORT PLATE: 20 GA. MINIMUM (IF WOOD NAILERS ARE PRESENT, SUPPORT PLATE IS NOT NEEDED)



# PAC-150 FLASHING DETAILS - Metal Deck w/ ISO

# RAKE WALL w/ FASCIA DETAIL



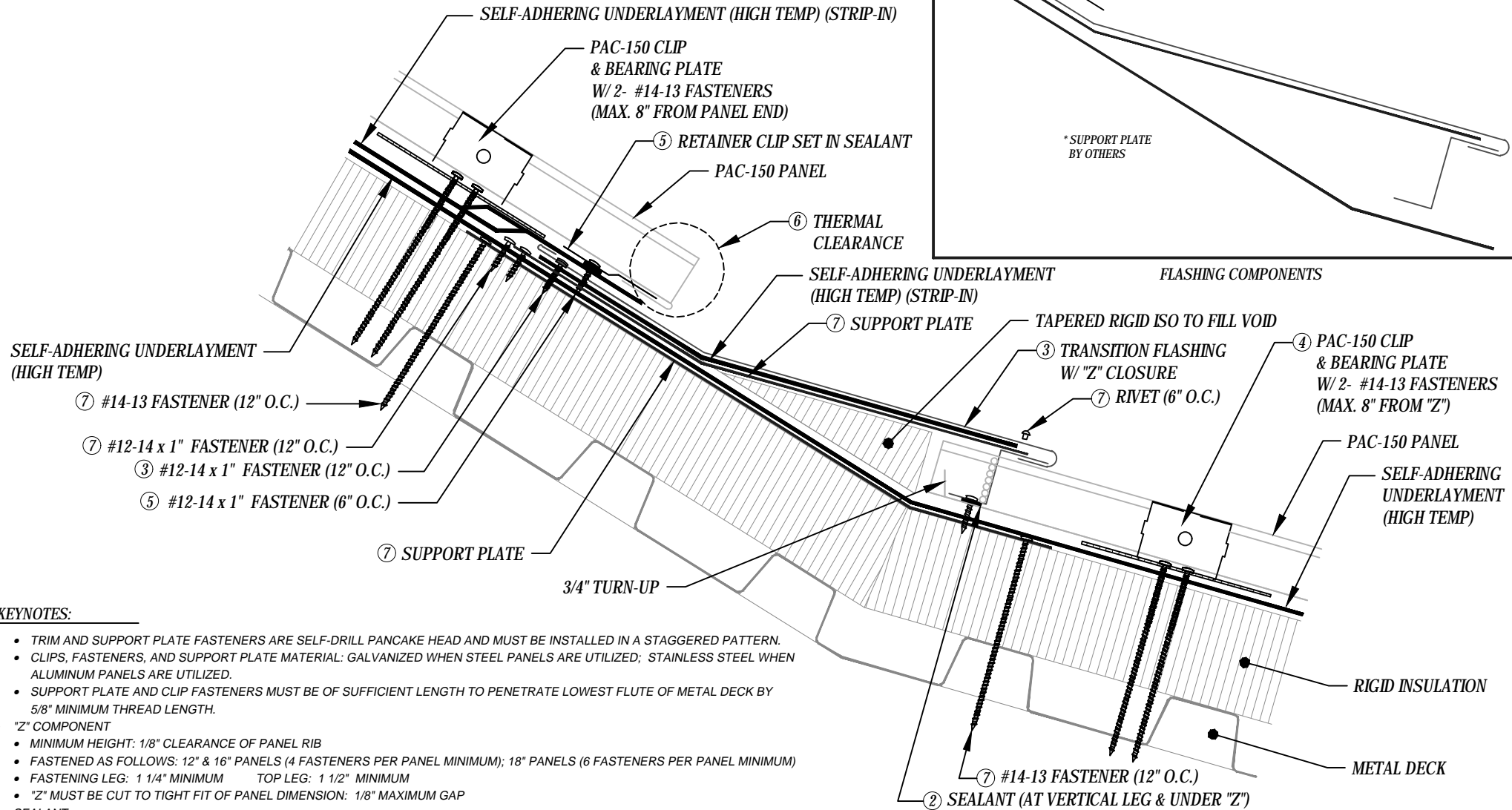
FLASHING COMPONENTS

## KEYNOTES:

- TRIM AND SUPPORT PLATE FASTENERS ARE SELF-DRILL PANCAKE HEAD AND MUST BE INSTALLED IN A STAGGERED PATTERN.
  - CLIPS, FASTENERS, AND SUPPORT PLATE MATERIAL: GALVANIZED WHEN STEEL PANELS ARE UTILIZED; STAINLESS STEEL WHEN ALUMINUM PANELS ARE UTILIZED.
  - SUPPORT PLATE AND CLIP FASTENERS MUST BE OF SUFFICIENT LENGTH TO PENETRATE LOWEST FLUTE OF METAL DECK BY 5/8" MINIMUM THREAD LENGTH.
- ① RAKE FLASHING:
- PANEL LEG MUST BE FORMED TO WITHIN 1/8" OF J-CHANNEL WEB.
  - DECK SIDE LEG SHOULD BE A MINIMUM OF 3" LONG WITH FASTENER LOCATED 2" MAXIMUM FROM EDGE.
  - J-CHANNEL FORMED TO HEIGHT OF PANEL RIB.
- ② SEALANT CAN BE TUBE OR TAPE SEALANT AND MUST BE CONTINUOUS.
- ③ SUPPORT PLATE: 20 GA. MINIMUM (IF WOOD NAILERS ARE PRESENT, SUPPORT PLATE IS NOT NEEDED)



# ROOF TRANSITION DETAIL



## KEYNOTES:

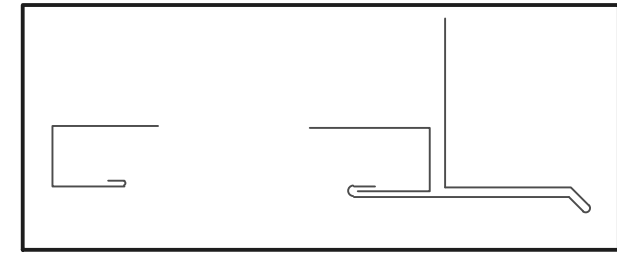
- TRIM AND SUPPORT PLATE FASTENERS ARE SELF-DRILL PANCAKE HEAD AND MUST BE INSTALLED IN A STAGGERED PATTERN.
- CLIPS, FASTENERS, AND SUPPORT PLATE MATERIAL: GALVANIZED WHEN STEEL PANELS ARE UTILIZED; STAINLESS STEEL WHEN ALUMINUM PANELS ARE UTILIZED.
- SUPPORT PLATE AND CLIP FASTENERS MUST BE OF SUFFICIENT LENGTH TO PENETRATE LOWEST FLUTE OF METAL DECK BY 5/8" MINIMUM THREAD LENGTH.

- ① "Z" COMPONENT
  - MINIMUM HEIGHT: 1/8" CLEARANCE OF PANEL RIB
  - FASTENED AS FOLLOWS: 12" & 16" PANELS (4 FASTENERS PER PANEL MINIMUM); 18" PANELS (6 FASTENERS PER PANEL MINIMUM)
  - FASTENING LEG: 1 1/4" MINIMUM TOP LEG: 1 1/2" MINIMUM
  - "Z" MUST BE CUT TO TIGHT FIT OF PANEL DIMENSION: 1/8" MAXIMUM GAP
- ② SEALANT
  - TUBE OR TAPE SEALANT IS ACCEPTABLE BELOW THE "Z"
  - TUBE SEALANT PLACED AT BACKSIDE OF VERTICAL LEGS
  - 1" TAPE WIDTH OR 1/2" BEAD WIDTH PRIOR TO COMPRESSION
- ③ TRANSITION FLASHING: HEMMED 1" AND FULLY ENGAGED TO "Z" CLOSURE.
- ④ FIRST PANEL CLIP TO BE LOCATED A **MAXIMUM OF 8" FROM "Z" COMPONENT**.
- ⑤ RETAINER CLIP: FASTENED TO SUPPORT PLATE AT 6" O.C. STAGGERED PATTERN.
- ⑥ PANEL HEM THERMAL GAP CLEARANCE: MINIMUM 1 1/2" HEM WITH 1/2" CLEARANCE (CONSULT FACTORY)
- ⑦ SUPPORT PLATE: 20 GA. MINIMUM (IF WOOD NAILERS ARE PRESENT, SUPPORT PLATE IS NOT NEEDED)

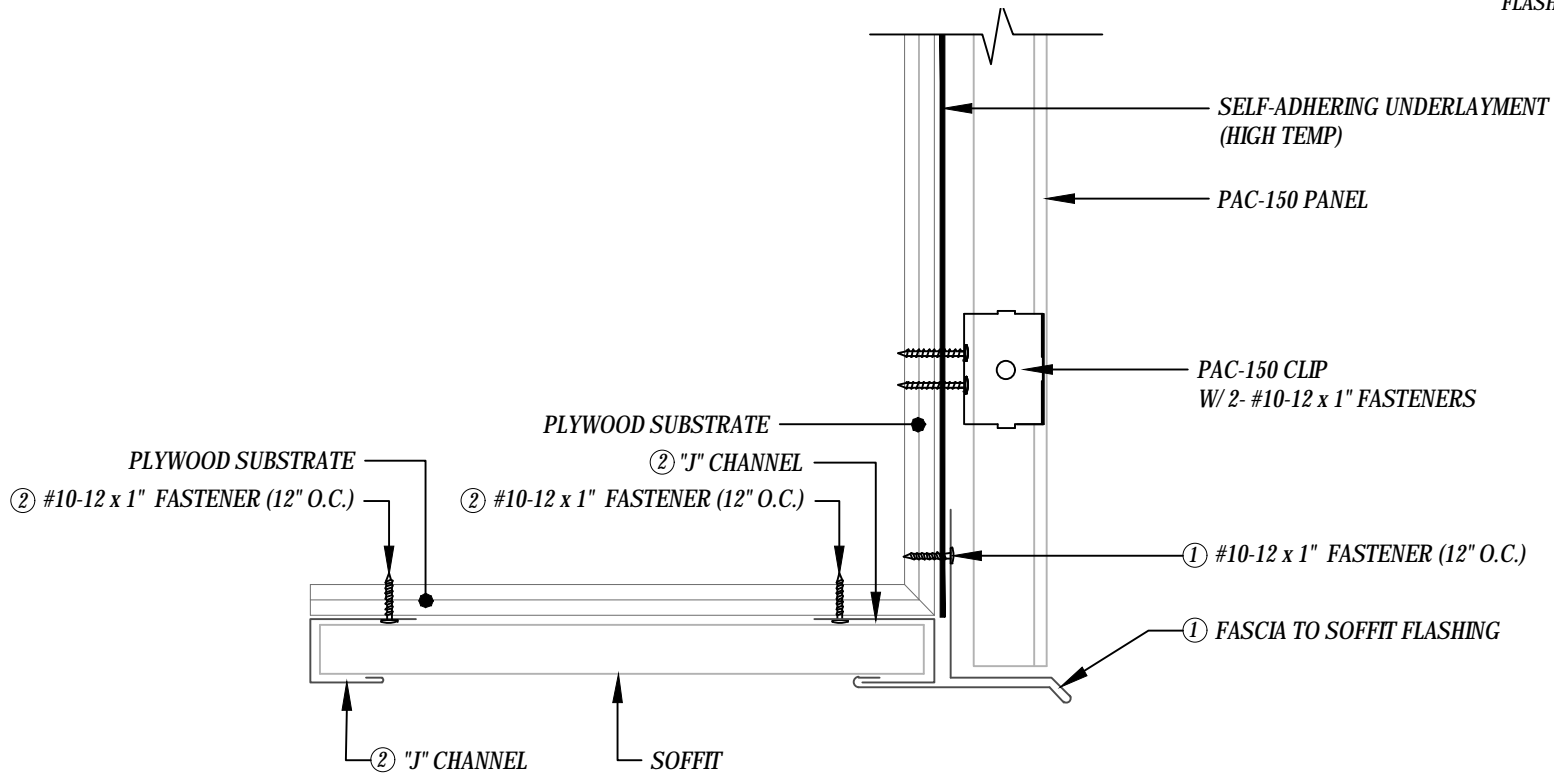


# PAC-150 FLASHING DETAILS - Metal Deck w/ ISO

# FASCIA TO SOFFIT DETAIL



FLASHING COMPONENTS



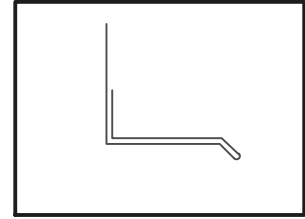
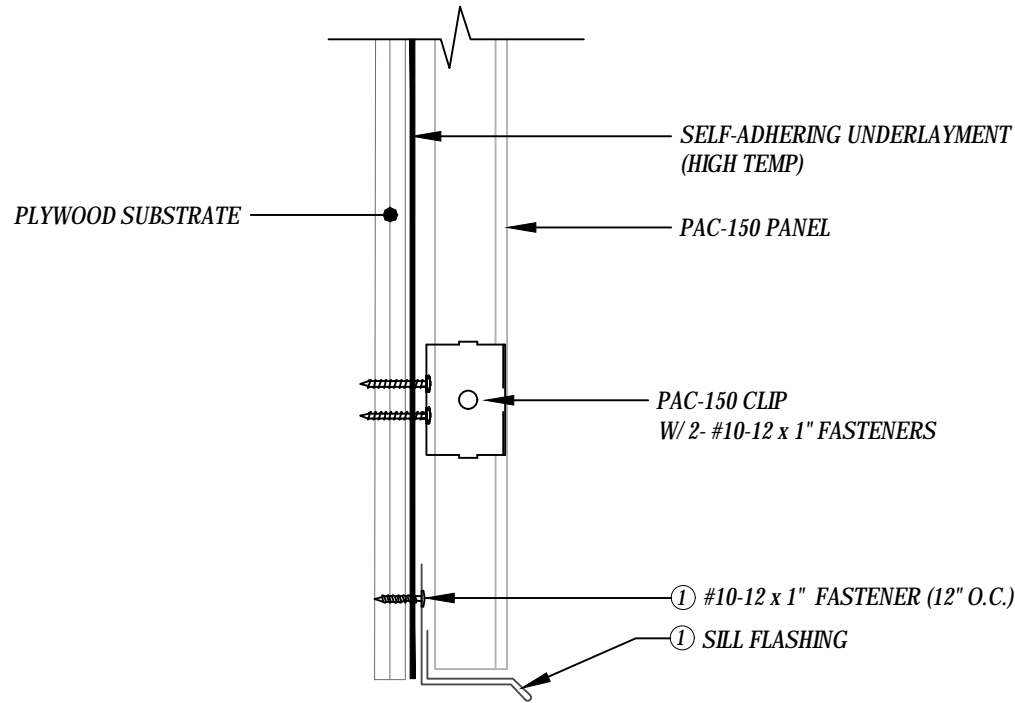
## KEYNOTES:

- TRIM FASTENERS ARE SELF-DRILL PANCAKE HEAD AND MUST BE INSTALLED IN A STAGGERED PATTERN.
  - CLIPS AND FASTENERS MATERIAL: GALVANIZED WHEN STEEL PANELS ARE UTILIZED; STAINLESS STEEL WHEN ALUMINUM PANELS ARE UTILIZED.
- ① FASCIA TO SOFFIT FLASHING:
- FASTENED WITH #10 FASTENER AT MAXIMUM 12" ON-CENTER (STAGGERED PATTERN).
  - VERTICAL LEG SHOULD BE A MINIMUM OF 3" LONG WITH FASTENER LOCATED 2" MAXIMUM FROM EDGE.
- ② "J" CHANNEL: FASTENED WITH #10 FASTENER AT MAXIMUM 12" ON-CENTER (STAGGERED PATTERN).



# PAC-150 FLASHING DETAILS

# SILL DETAIL



FLASHING COMPONENTS

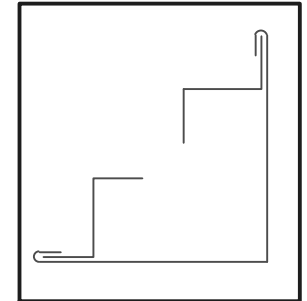
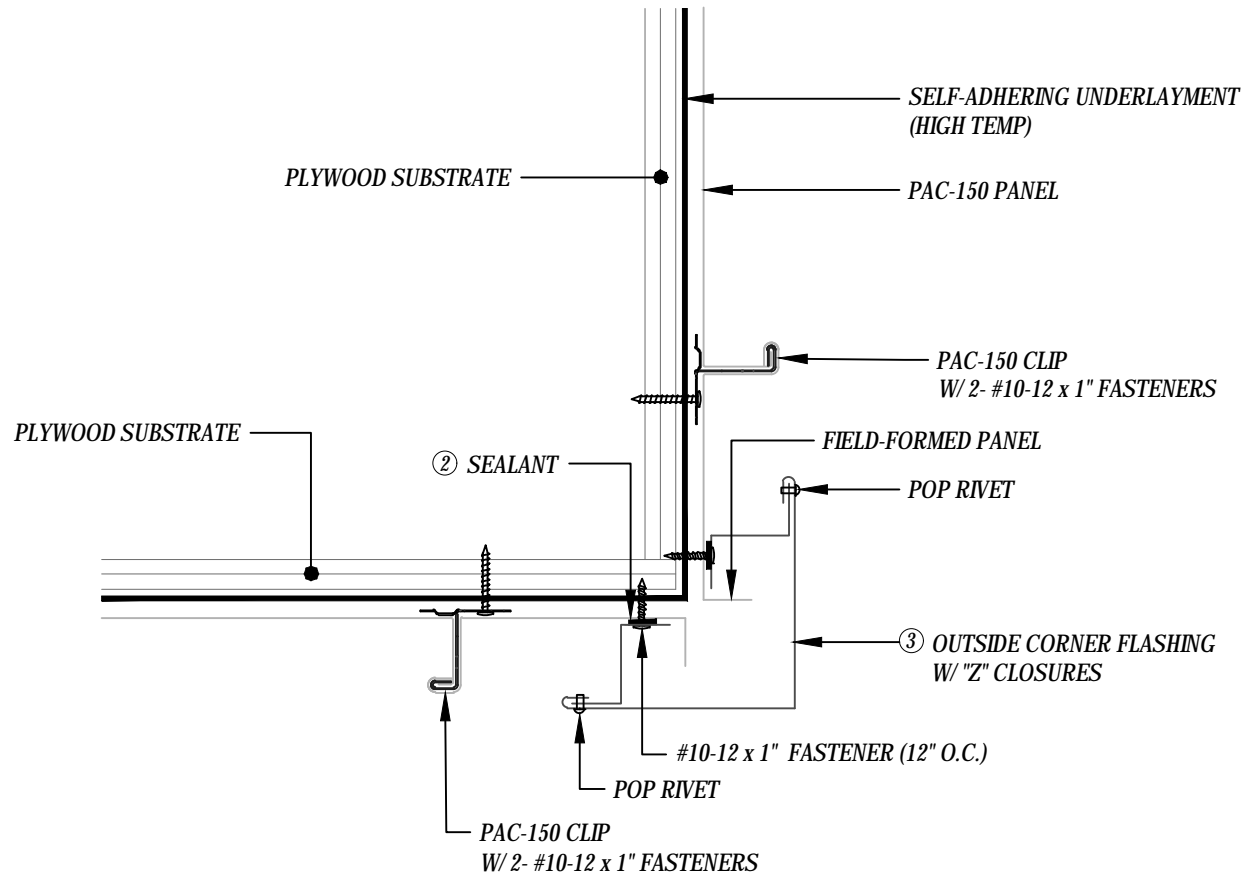
## KEYNOTES:

- TRIM FASTENERS ARE SELF-DRILL PANCAKE HEAD AND MUST BE INSTALLED IN A STAGGERED PATTERN.
- CLIPS AND FASTENERS MATERIAL: GALVANIZED WHEN STEEL PANELS ARE UTILIZED; STAINLESS STEEL WHEN ALUMINUM PANELS ARE UTILIZED.

① SILL FLASHING: FASTENED WITH #10 FASTENER AT MAXIMUM 12" ON-CENTER (STAGGERED PATTERN).



# OUTSIDE CORNER DETAIL



FLASHING COMPONENTS

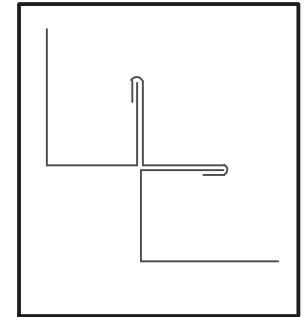
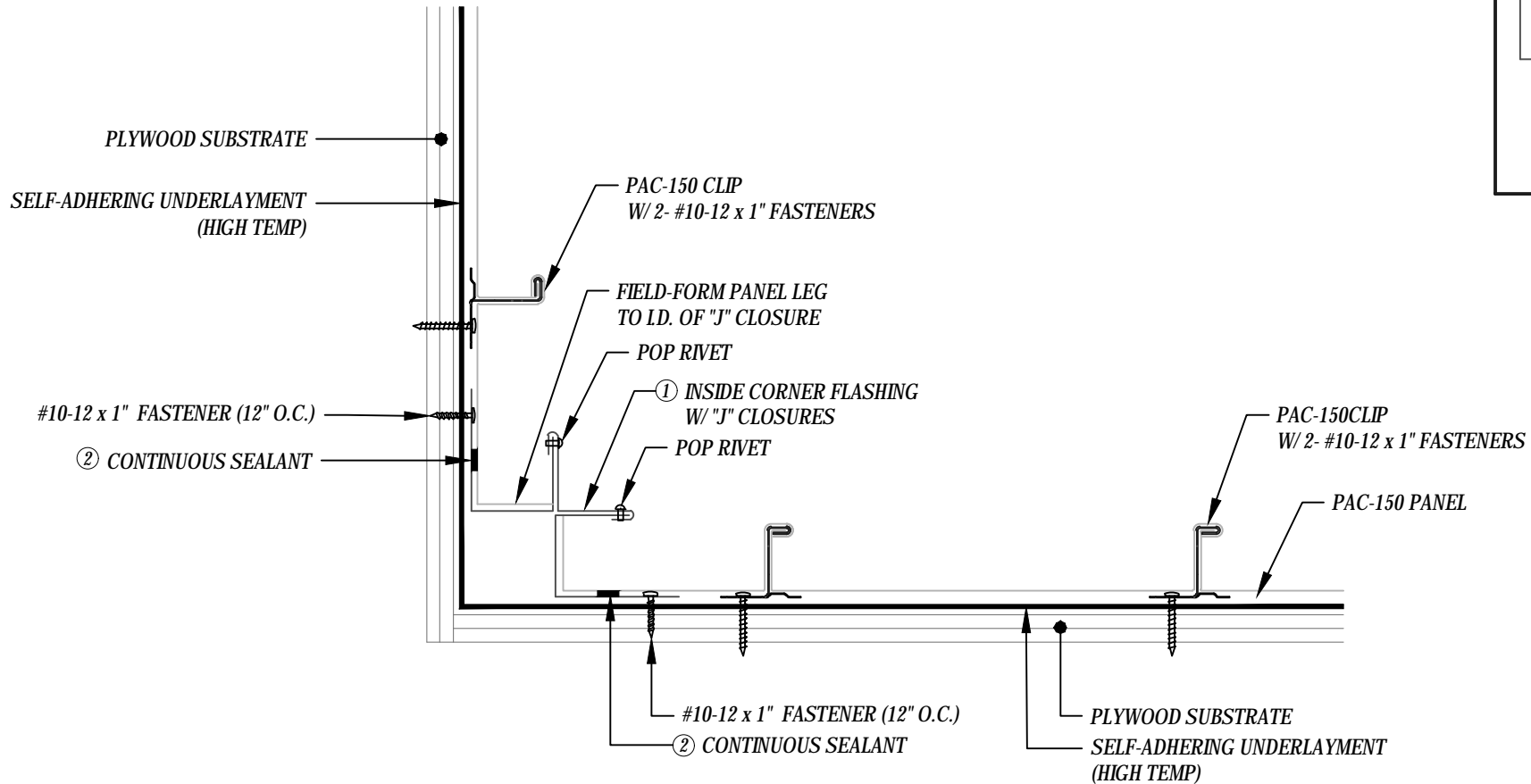
## KEYNOTES:

- TRIM FASTENERS ARE SELF-DRILL PANCAKE HEAD AND MUST BE INSTALLED IN A STAGGERED PATTERN.
  - CLIPS AND FASTENERS MATERIAL: GALVANIZED WHEN STEEL PANELS ARE UTILIZED; STAINLESS STEEL WHEN ALUMINUM PANELS ARE UTILIZED.
- ① "Z" COMPONENT
    - MINIMUM HEIGHT: 1/8" CLEARANCE OF PANEL RIB
    - FASTENING LEG: 1 1/4" MINIMUM      TOP LEG: 1 1/2" MINIMUM
  - ② SEALANT
    - TUBE OR TAPE SEALANT IS ACCEPTABLE BELOW THE "Z"
    - 1" TAPE WIDTH OR 1/2" BEAD WIDTH PRIOR TO COMPRESSION
  - ③ OUTSIDE CORNER FLASHING
    - HEMMED 1" AND FULLY ENGAGED TO "Z" CLOSURE.



# PAC-150 FLASHING DETAILS

# INSIDE CORNER DETAIL



FLASHING COMPONENTS

## KEYNOTES:

- TRIM FASTENERS ARE SELF-DRILL PANCAKE HEAD AND MUST BE INSTALLED IN A STAGGERED PATTERN.
- CLIPS AND FASTENERS MATERIAL: GALVANIZED WHEN STEEL PANELS ARE UTILIZED; STAINLESS STEEL WHEN ALUMINUM PANELS ARE UTILIZED.

### ① INSIDE CORNER FLASHING

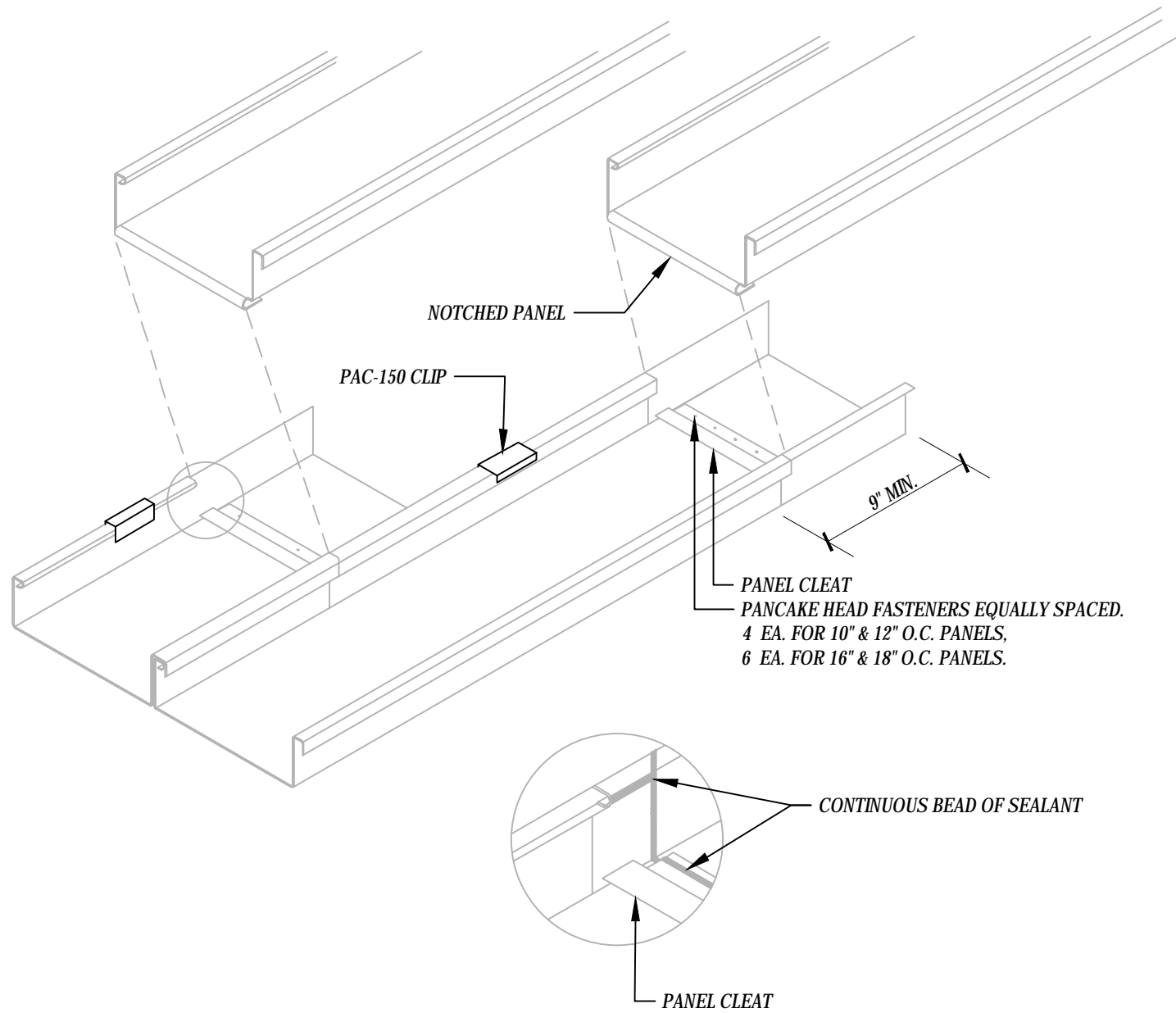
- PANEL LEG MUST BE FORMED TO WITHIN 1/8" OF J-CHANNEL WEB.
- DECK SIDE LEG SHOULD BE A MINIMUM OF 3" LONG WITH FASTENER LOCATED 2" MAXIMUM FROM EDGE.
- J-CHANNEL FORMED TO HEIGHT OF PANEL RIB.

### ② SEALANT CAN BE TUBE OR TAPE SEALANT AND MUST BE CONTINUOUS.



# PAC-150 FLASHING DETAILS

# PANEL LAP DETAIL



NOTE: LAPS MUST BE STAGGERED 2' OR 4'.

## FIELD BEND PANEL DETAIL

