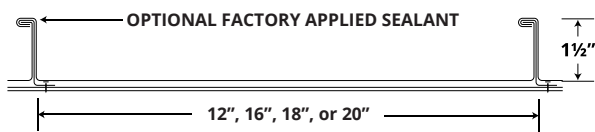
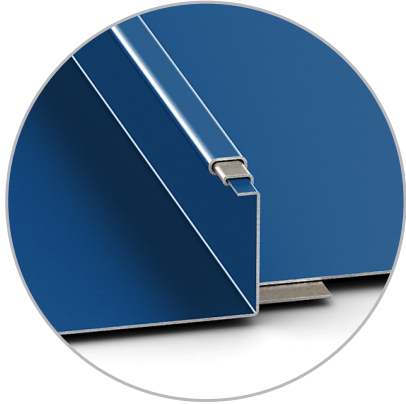
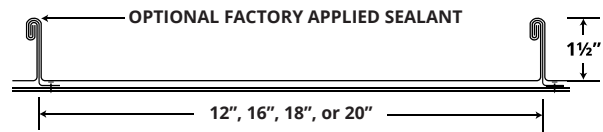
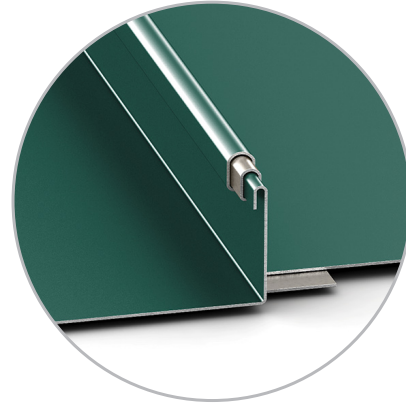


PAC-150 90° SEAM



PAC-150 180° SEAM



U.L. Construction Numbers 588, 603

PAC-150 Panels combine light-structural panel performance with architectural panel aesthetics. PAC-150 panels are field-seamed to 90 or 180 degrees and carry a UL rating over wood assemblies as indicated by the above listed U.L. Construction Numbers.

Features:	<ul style="list-style-type: none"> .032 aluminum or 24 ga. steel (Standard colors are limited in .040 aluminum and 22 ga. steel) 12" O.C., 16" O.C., 18" O.C., 20" O.C. Optional Factory Applied Sealant Bead in Seam Tension Levelled Available Smooth, With Striations or Pencil Ribs with Striations, check with factory
Requirements:	<ul style="list-style-type: none"> Solid Substrate, Open Framing or Rigid Insulation Vapor Barrier (on solid substrate and rigid insulation) Clips, Architectural, Fixed or Utility Bearing Plates: Required when used in assembly including rigid insulation over metal decking, plates are optional when a coverboard is used Minimum Roof Pitch: 2 on 12 slope
Finish:	<ul style="list-style-type: none"> PAC-CLAD® (Full 70% PVDF Finish)
Air & Water Infiltration Tested:	<ul style="list-style-type: none"> TAS-100
Note:	<ul style="list-style-type: none"> When a UL, FBC, or NOA Rating is required, Petersen Aluminum Corporation must be notified prior to fabrication of the panels.
Uplift Tested:	<ul style="list-style-type: none"> UL-580, UL-1897, and TAS-125

PETERSEN ALUMINUM CORPORATION

www.pac-clad.com / email: sales@petersenmail.com

HQ: 1005 Tonne Road
Elk Grove Village, IL 60007
P: 800-PAC-CLAD
F: 800-722-7150

9060 Junction Drive
Annapolis Junction, MD 20701
P: 800-344-1400
F: 301-953-7627

10551 PAC Road
Tyler, TX 75707
P: 800-441-8661
F: 903-581-8592

102 Northpoint Parkway
Acworth, GA 30102
P: 800-272-4482
F: 770-420-2533

PAC-150