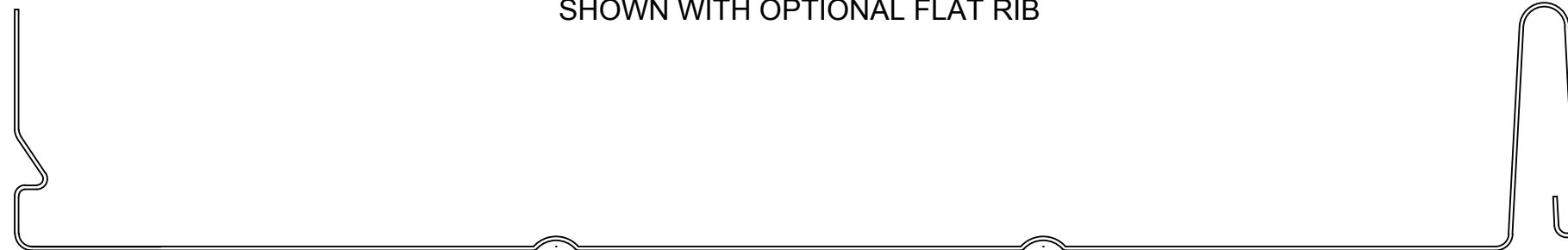
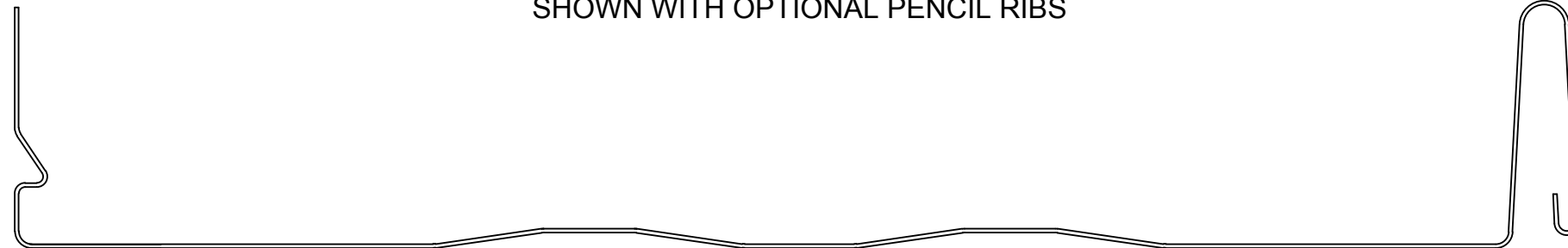


SHOWN WITH OPTIONAL FLAT RIB

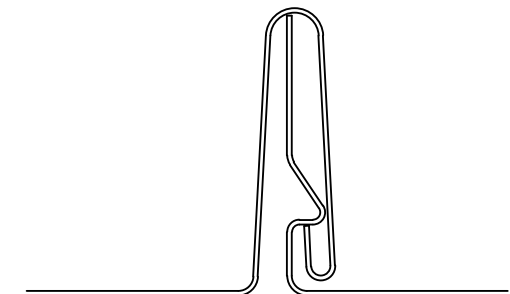


SHOWN WITH OPTIONAL PENCIL RIBS



SHOWN WITH OPTIONAL STRIATIONS

Q-150 INTERLOCK



NOTE: Not all stiffening options are available at all locations - actual appearance may vary slightly.



PAC CLAD
 PETERSEN ALUMINUM CORPORATION
 102 NORTHPOINT PARKWAY, BLDG 102
 ACWORTH, GA 30102
 PH: 77-0427-6378 FAX: 770-420-2533

JOB
Q-150 PANEL

DETAIL
PANEL PROFILE

SCALE
 N.T.S.

ARCH REFERENCE
 N/A

FILE #
 DLT

DATE
 25 JULY 2015

SHEET

A1

ROOF PANEL CLIP. FASTEN THROUGH TO DECKING W/ TWO (2) SCREWS OF THE APPROPRIATE DESIGN FOR THE UNDERLYING DECK. DO NOT OVER-TORQUE SCREWS.

Q-150 ROOF PANEL.

UNDERLAYMENT.

DECKING.

INSTALLER TO FIELD NOTCH & FOLD PANEL UNDER 180°. HOOK PANEL ON EAVE FLASHING.

EAVE FLASHING & CLEAT. FASTEN CLEAT TO FASCIA W/ SCREWS 12" OC MAX. HOOK EAVE FLASHING ON CLEAT AT BOTTOM, THEN FASTEN AT TOP TO DECKING WITH SCREWS 12" OC MAX.

FASCIA.

JOB
Q-150 PANEL

DETAIL
EAVE SECTION

SHEET



PAC CLAD
PETERSEN ALUMINUM CORPORATION
102 NORTHPOINT PARKWAY, BLDG 102
ACWORTH, GA 30102
PH: 77-0427-6378 FAX: 770-420-2533

SCALE
N.T.S.

ARCH REFERENCE
N/A

FILE #
DLT

DATE
25 JULY 2015

A2

ROOF PANEL CLIP. FASTEN THROUGH TO DECKING W/ TWO (2) SCREWS OF THE APPROPRIATE DESIGN FOR THE UNDERLYING DECK. DO NOT OVER-TORQUE SCREWS.

Q-150 ROOF PANEL.

UNDERLAYMENT.

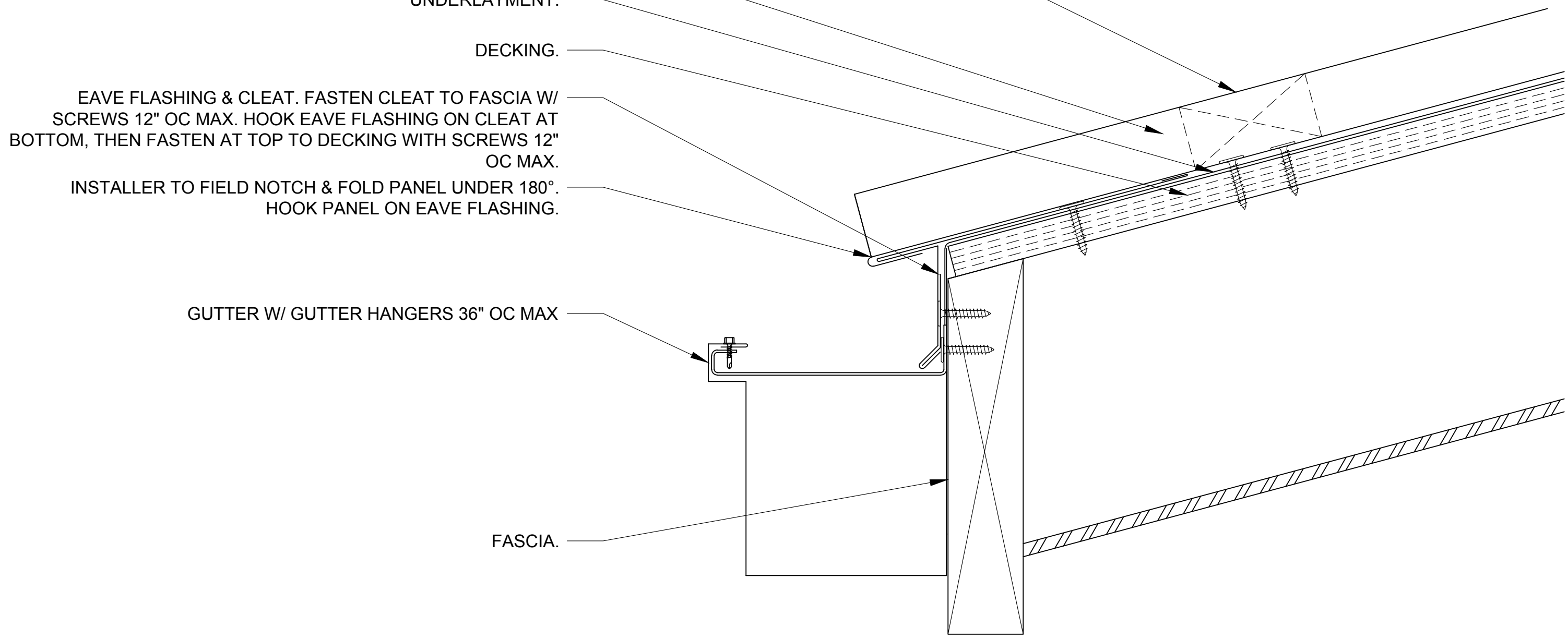
DECKING.

EAVE FLASHING & CLEAT. FASTEN CLEAT TO FASCIA W/ SCREWS 12" OC MAX. HOOK EAVE FLASHING ON CLEAT AT BOTTOM, THEN FASTEN AT TOP TO DECKING WITH SCREWS 12" OC MAX.

INSTALLER TO FIELD NOTCH & FOLD PANEL UNDER 180°. HOOK PANEL ON EAVE FLASHING.

GUTTER W/ GUTTER HANGERS 36" OC MAX

FASCIA.



PAC CLAD
 PETERSEN ALUMINUM CORPORATION
 102 NORTHPOINT PARKWAY, BLDG 102
 ACWORTH, GA 30102
 PH: 77-0427-6378 FAX: 770-420-2533

JOB
Q-150 PANEL

DETAIL	
EAVE SECTION w/ GUTTER	
SCALE N.T.S.	ARCH REFERENCE N/A
FILE # DLT	DATE 15 JULY 2015

SHEET
A3

RIDGE CAP. HOOK ON Z CLOSURE ON BOTH SIDES.

INSTALLER TO FIELD BEND TOP OF PANEL UP $\frac{3}{4}$ ".

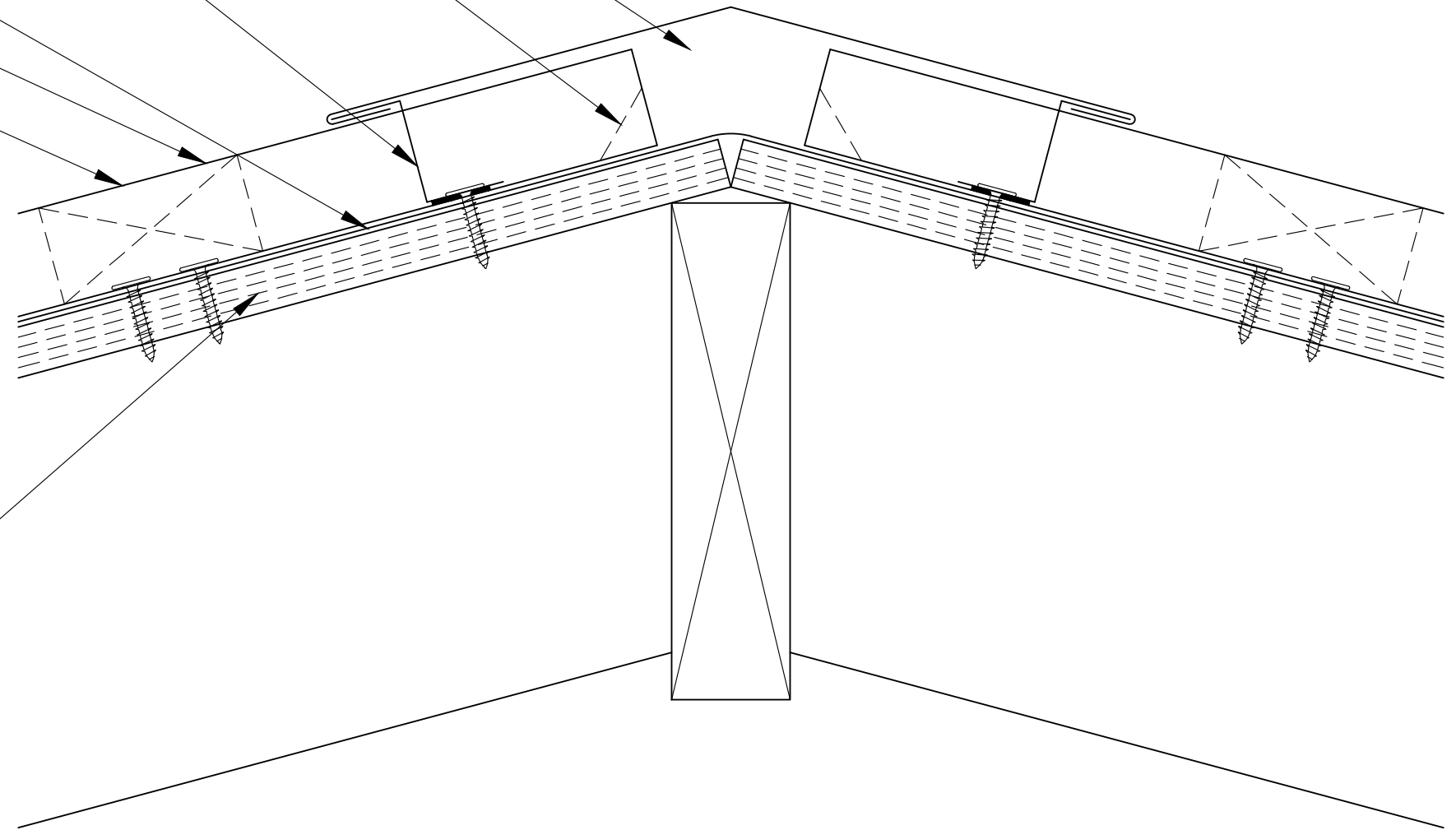
Z CLOSURE. INSTALLER TO CUT TO FIT BETWEEN PANEL RIBS. BED ON CONT. BUTYL TAPE SEALANT. FASTEN THROUGH TO DECKING WITH FOUR (4) SCREWS PER PANEL. SEAL ALL HORIZONTAL AND MATING SURFACES W/ ROOF SEALANT.

UNDERLAYMENT

Q-150 ROOF PANEL

ROOF PANEL CLIP. FASTEN THROUGH TO DECKING W/ TWO (2) SCREWS OF THE APPROPRIATE DESIGN FOR THE UNDERLYING DECK. DO NOT OVER-TORQUE SCREWS.

DECKING



PAC CLAD
PETERSEN ALUMINUM CORPORATION
102 NORTHPOINT PARKWAY, BLDG 102
ACWORTH, GA 30102
PH: 77-0427-6378 FAX: 770-420-2533

JOB
Q-150 PANEL

DETAIL
HIP/RIDGE SECTION

SCALE
N.T.S.

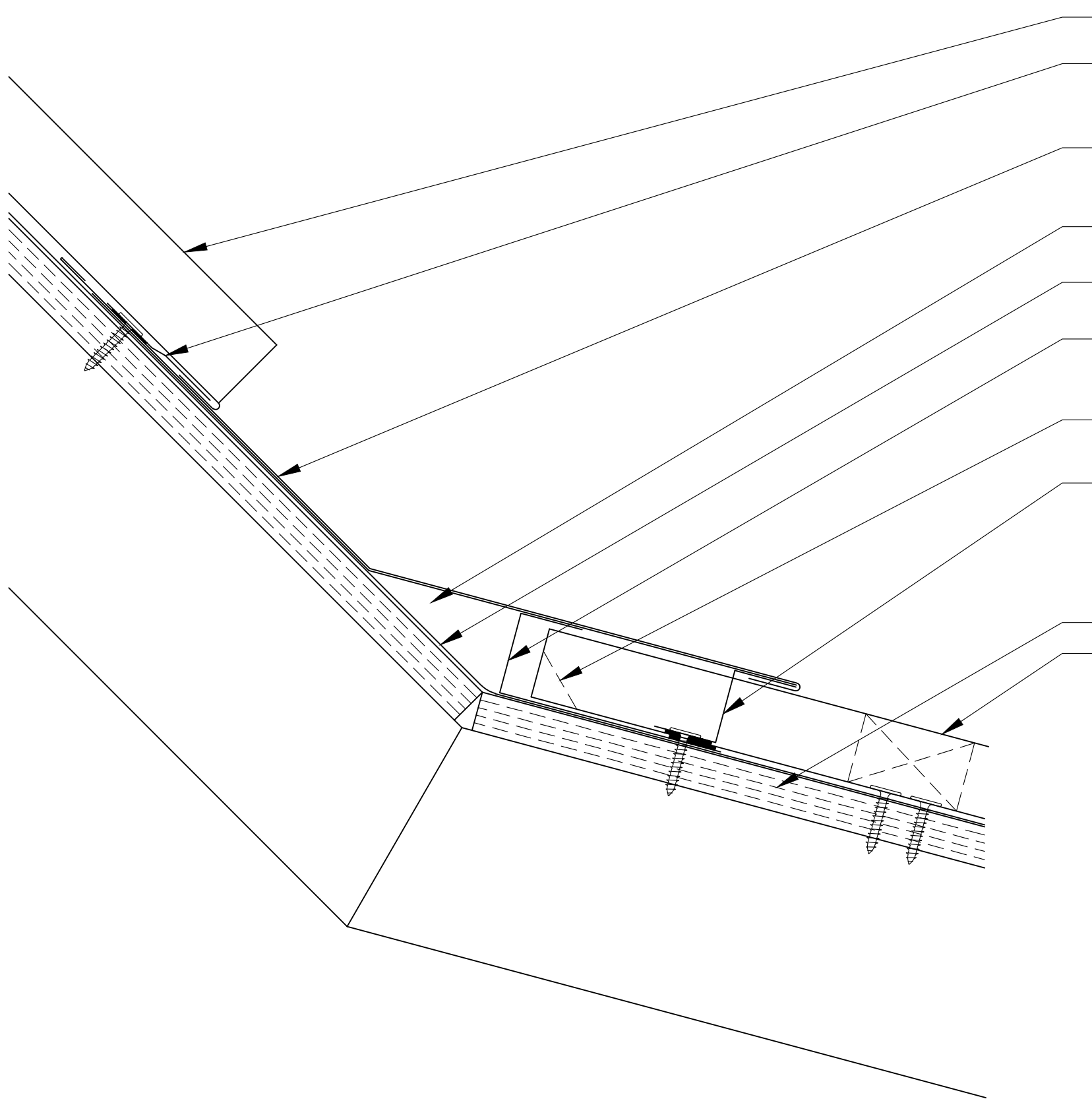
ARCH REFERENCE
N/A

FILE #
DLT

DATE
25 JULY 2015

SHEET

A4



- Q-150 ROOF PANEL.
- JOGGLE CLEAT. BED ON CONT. BUTYL TAPE SEALANT. FASTEN THROUGH TO DECKING W/ APPROPRIATE FASTENER 3" OC MAX.
- PITCH TRANSITION FLASHING. HOOK ON Z CLOSURE ON LOWER ROOF. FASTEN THROUGH TO DECKING AT TOP.
- FLEXIBLE MEMBRANE LINER TO OVERLAP J CLOSURE & Z CLOSURE.
- UNDERLAYMENT
- HEAVY GAUGE STEEL J CLOSURE. FASTEN TO DECKING W/ APPROPRIATE SCREWS 12" OC.
- INSTALLER TO FIELD FOLD TOP OF PANEL UP $\frac{3}{4}$ ".
- Z CLOSURE. INSTALLER TO CUT TO FIT BETWEEN PANEL RIBS. BED ON CONT BUTYL TAPE SEALANT. FASTEN THROUGH TO DECKING W/ FOUR (4) SCREWS PER PANEL. SEAL ALL VERTICAL & HORIZONTAL MATING SURFACES W/ ROOF SEALANT.
- DECKING.
- ROOF PANEL CLIP. FASTEN THROUGH TO DECKING W/ TWO (2) SCREWS OF THE APPROPRIATE DESIGN FOR THE UNDERLYING DECK. DO NOT OVER-TORQUE SCREWS.

ROOF PANEL CLIP. FASTEN THROUGH TO DECKING W/ TWO (2) SCREWS OF THE APPROPRIATE DESIGN FOR THE UNDERLYING DECK. DO NOT OVER-TORQUE SCREWS.

INSTALLER TO FIELD CUT PANEL TO WIDTH AS REQUIRED. FOLD PANEL UP 90° TO FIT SNUGLY WITHIN J CLOSURE.

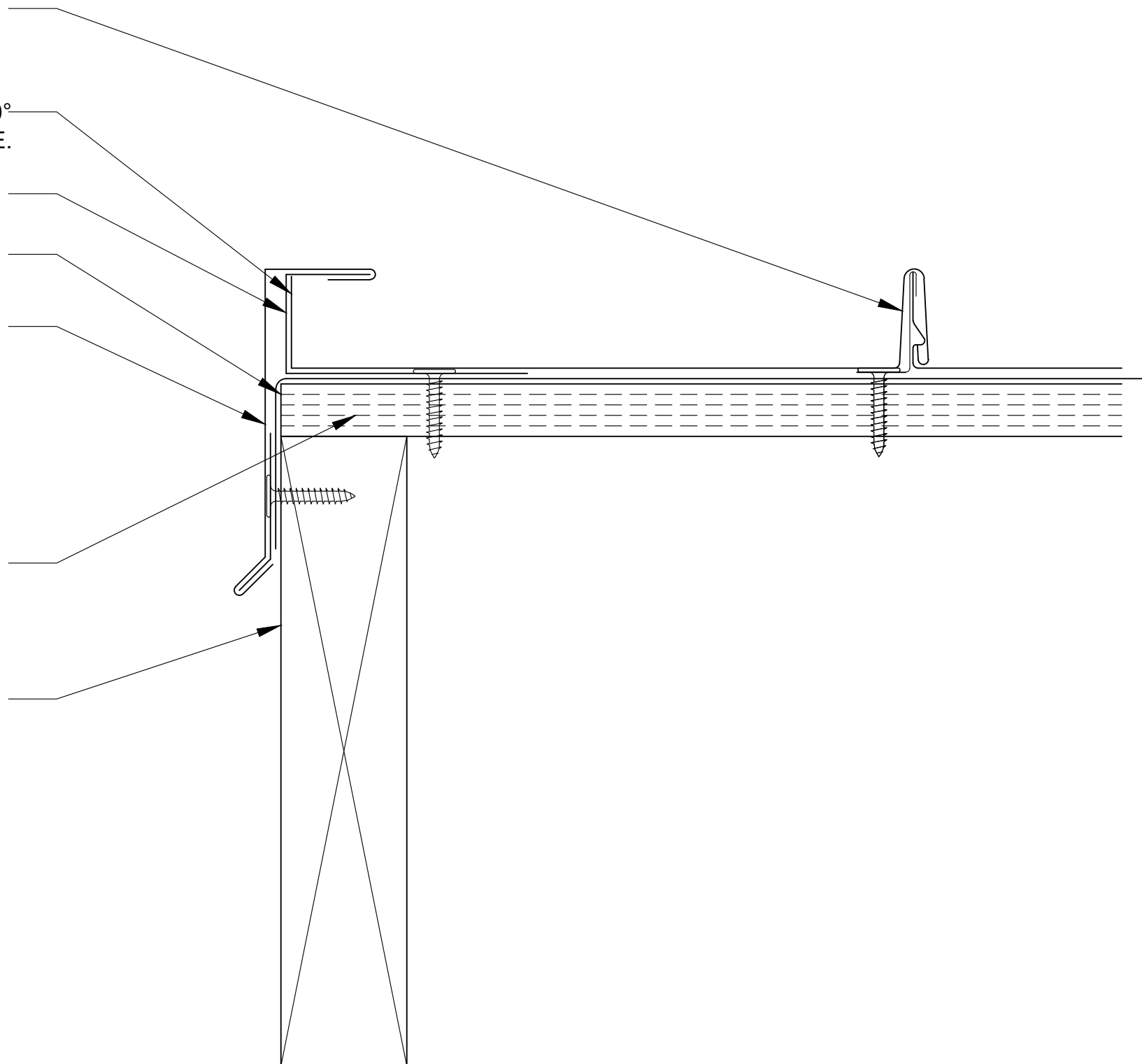
J CLOSURE. FASTEN TO DECKING W/ SCREWS 12" OC MAX.

UNDERLAYMENT TO TURN DOWN FACE BEHIND CLEAT.

GABLE FLASHING & CLEAT. FASTEN CLEAT TO FASCIA W/ SCREWS 12" OC MAX. HOOK GABLE FLASHING ON CLEAT AT BOTTOM & ON J CLOSURE AT TOP.

DECKING.

FASCIA.



PAC CLAD
 PETERSEN ALUMINUM CORPORATION
 102 NORTHPOINT PARKWAY, BLDG 102
 ACWORTH, GA 30102
 PH: 77-0427-6378 FAX: 770-420-2533

JOB
Q-150 PANEL

DETAIL
GABLE SECTION STANDARD

SCALE
 N.T.S.

ARCH REFERENCE
 N/A

FILE #
 DLT

DATE
 25 JULY 2015

SHEET

A6

ROOF PANEL CLIP. FASTEN THROUGH TO DECKING W/ TWO (2) SCREWS OF THE APPROPRIATE DESIGN FOR THE UNDERLYING DECK. DO NOT OVER-TORQUE SCREWS.

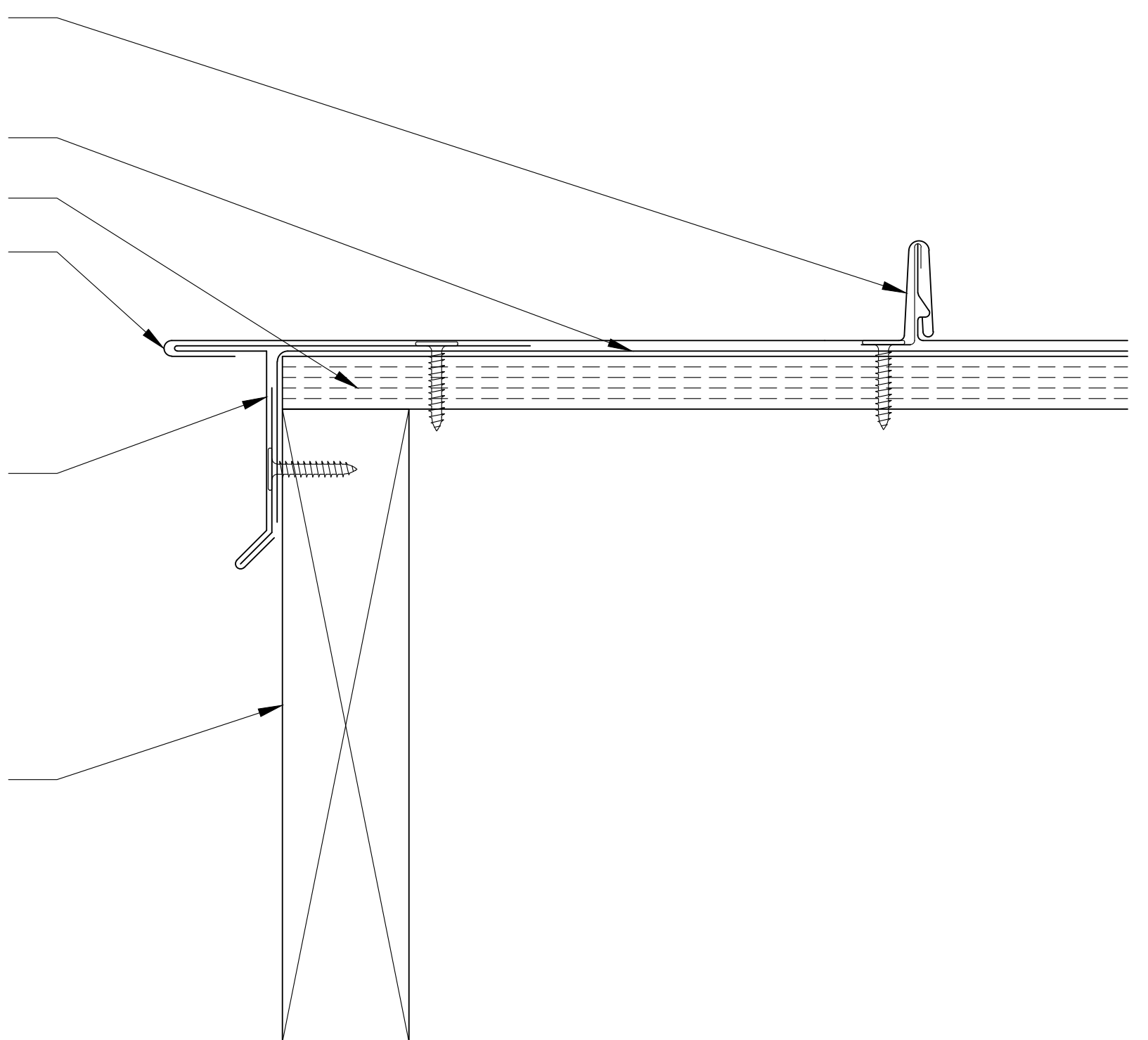
UNDERLAYMENT TO TURN DOWN FACE BEHIND CLEAT.

DECKING.

INSTALLER TO FIELD CUT PANEL TO WIDTH AS REQUIRED AND FOLD PANEL UNDER 180°. HOOK ON PANEL ON GABLE FLASHING.

GABLE FLASHING & CLEAT. FASTEN CLEAT TO FASCIA W/ SCREWS 12" OC MAX. HOOK GABLE FLASHING ON CLEAT AT BOTTOM & FASTEN TO DECKING AT TOP USING APPROPRIATE SCREWS 12" OC MAX.

FASCIA.

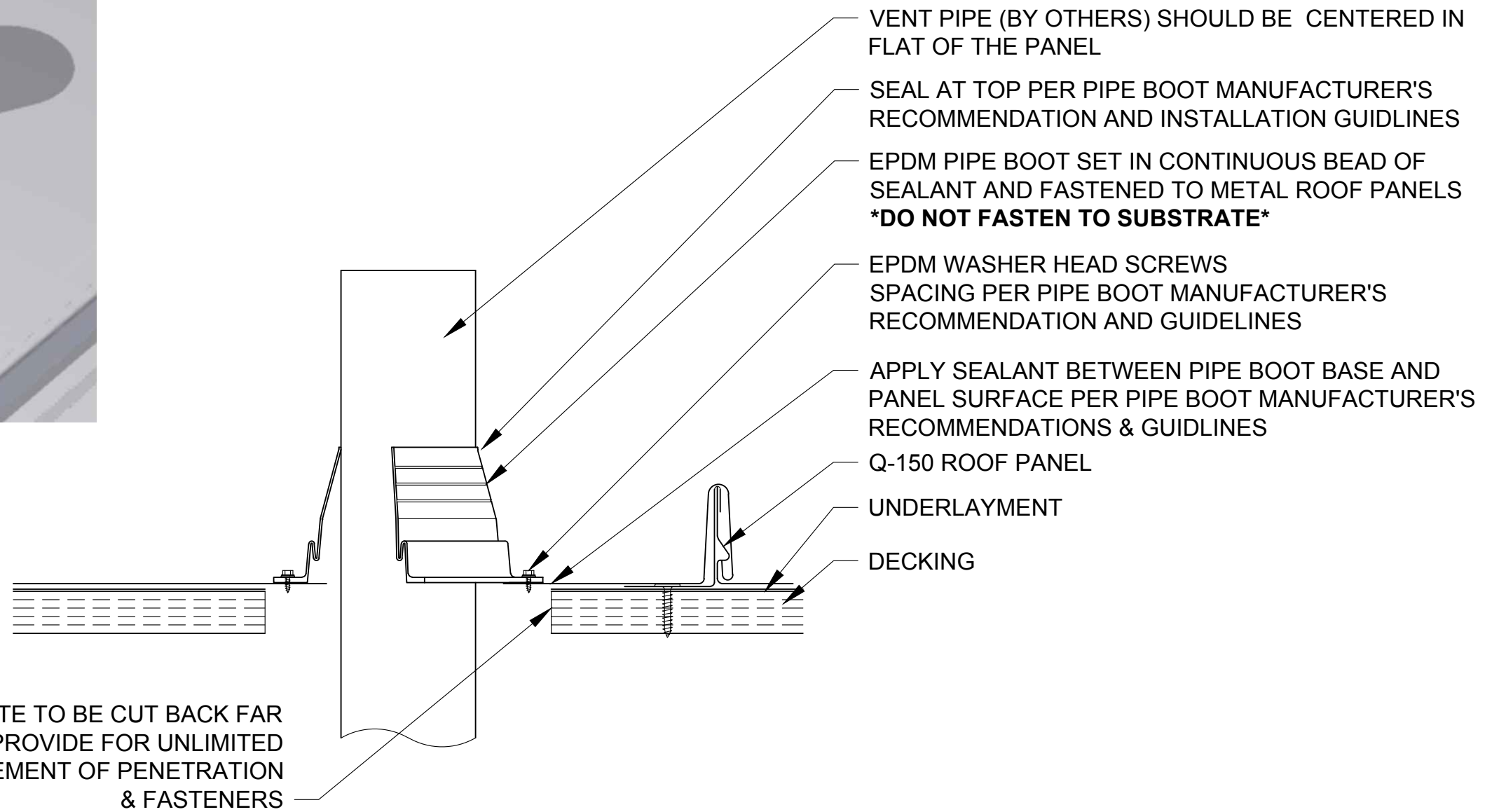
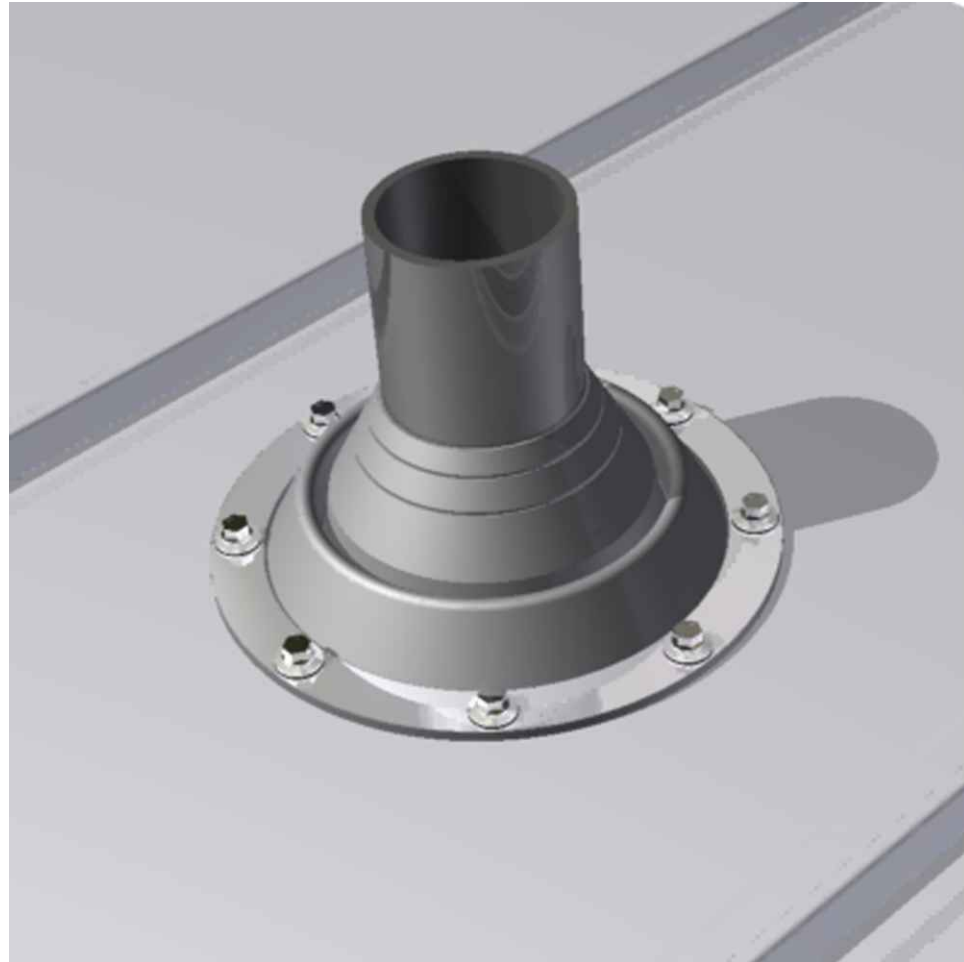


PAC CLAD
 PETERSEN ALUMINUM CORPORATION
 102 NORTHPOINT PARKWAY, BLDG 102
 ACWORTH, GA 30102
 PH: 77-0427-6378 FAX: 770-420-2533

JOB
Q-150 PANEL

DETAIL	
GABLE SECTION ALTERNATE	
SCALE N.T.S.	ARCH REFERENCE N/A
FILE # DLT	DATE 25 JULY 2015

SHEET
A7



PAC CLAD
PETERSEN ALUMINUM CORPORATION
102 NORTHPOINT PARKWAY, BLDG 102
ACWORTH, GA 30102
PH: 77-0427-6378 FAX: 770-420-2533

JOB

Q-150 PANEL

DETAIL	
VENT PIPE FLASHING DETAIL	
SCALE N.T.S.	ARCH REFERENCE N/A
FILE # DLT	DATE 25 JULY 2015

SHEET

A8